

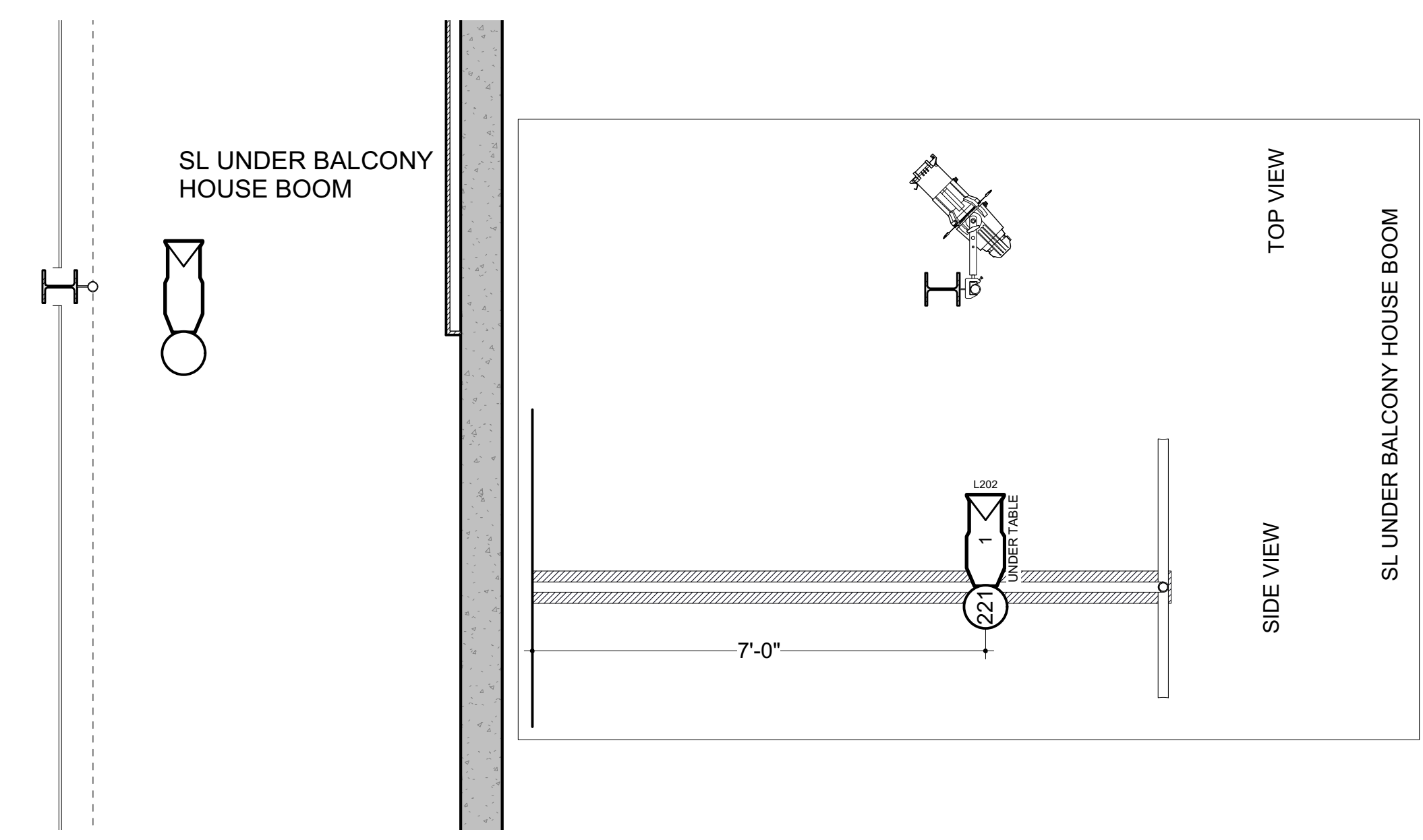
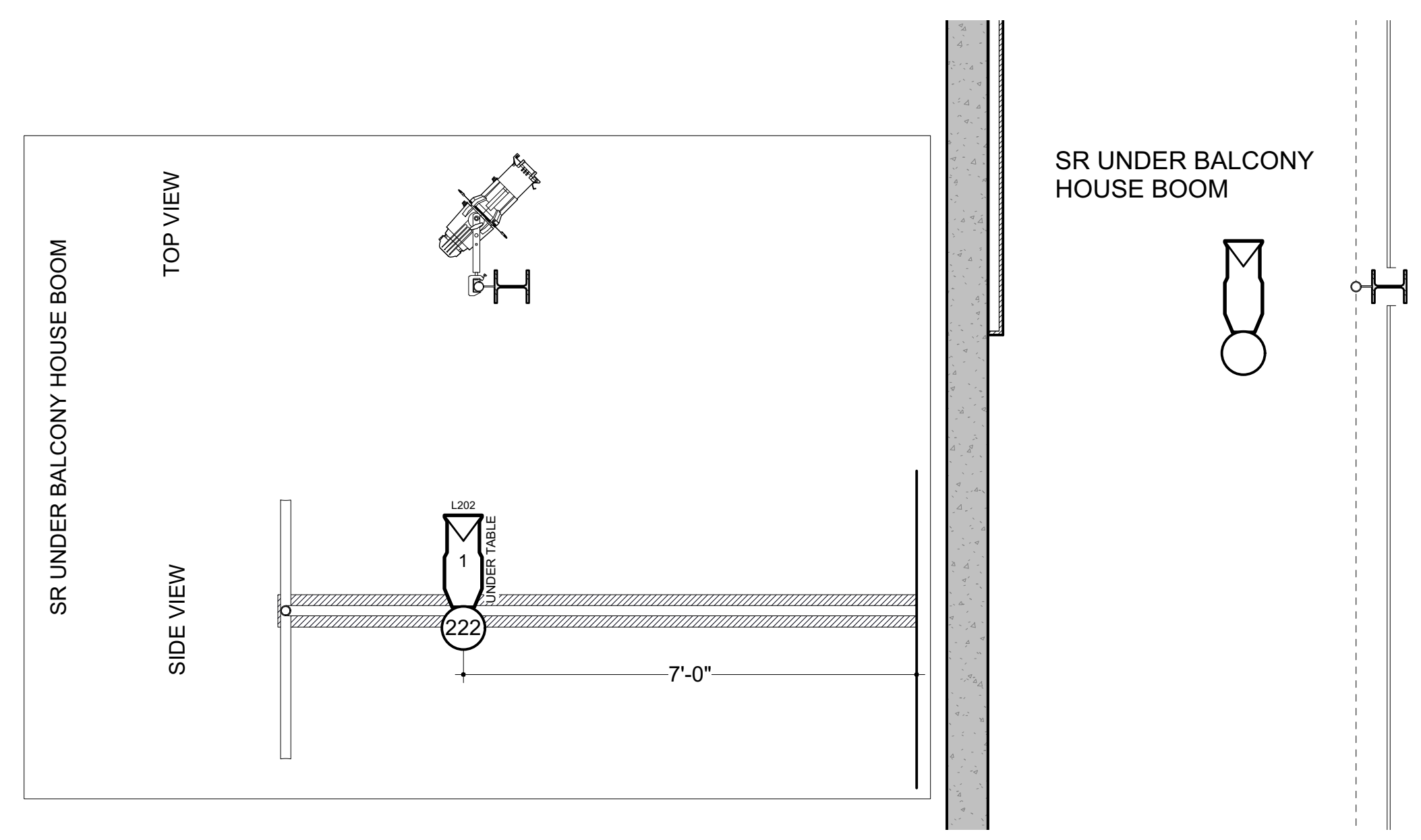
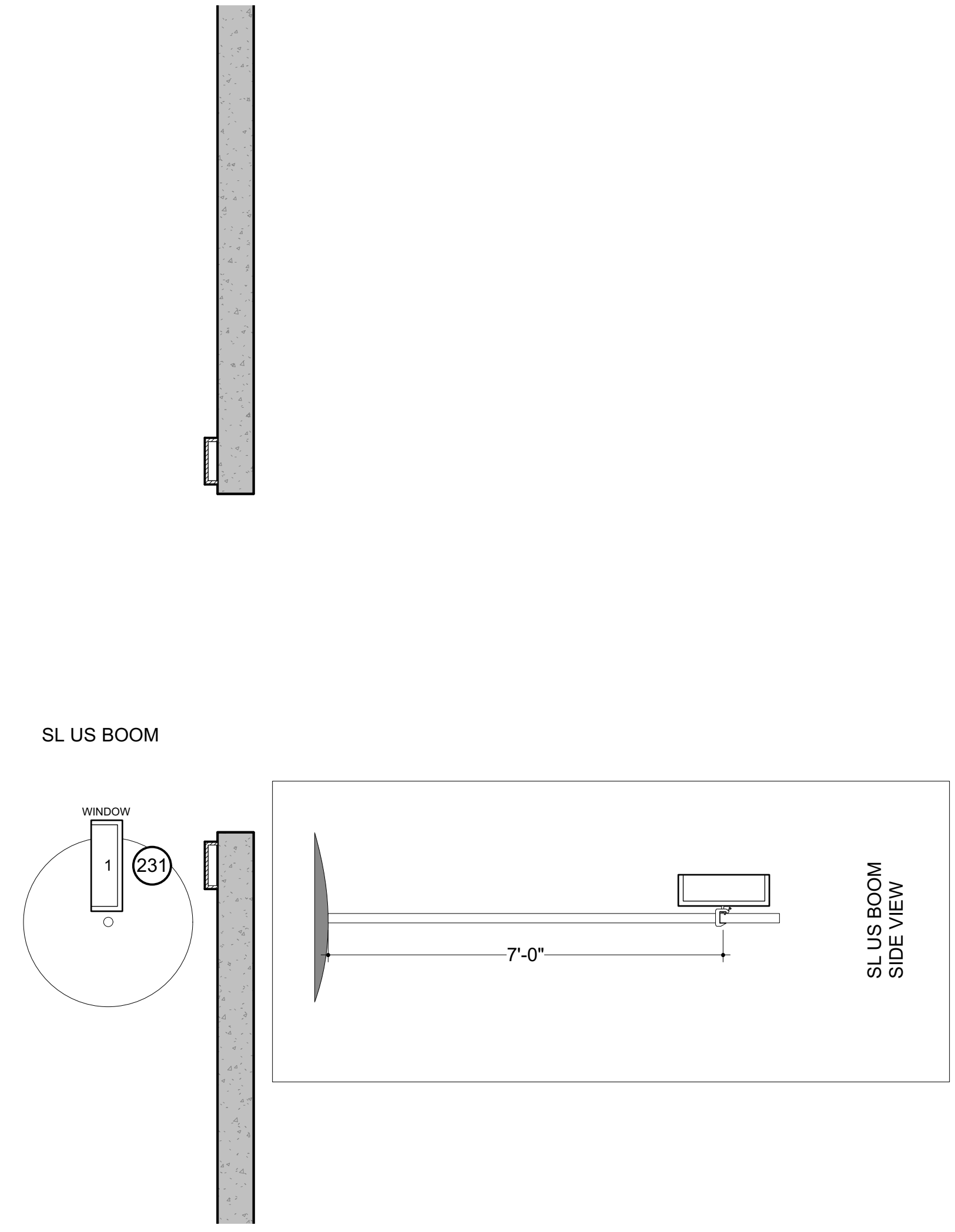
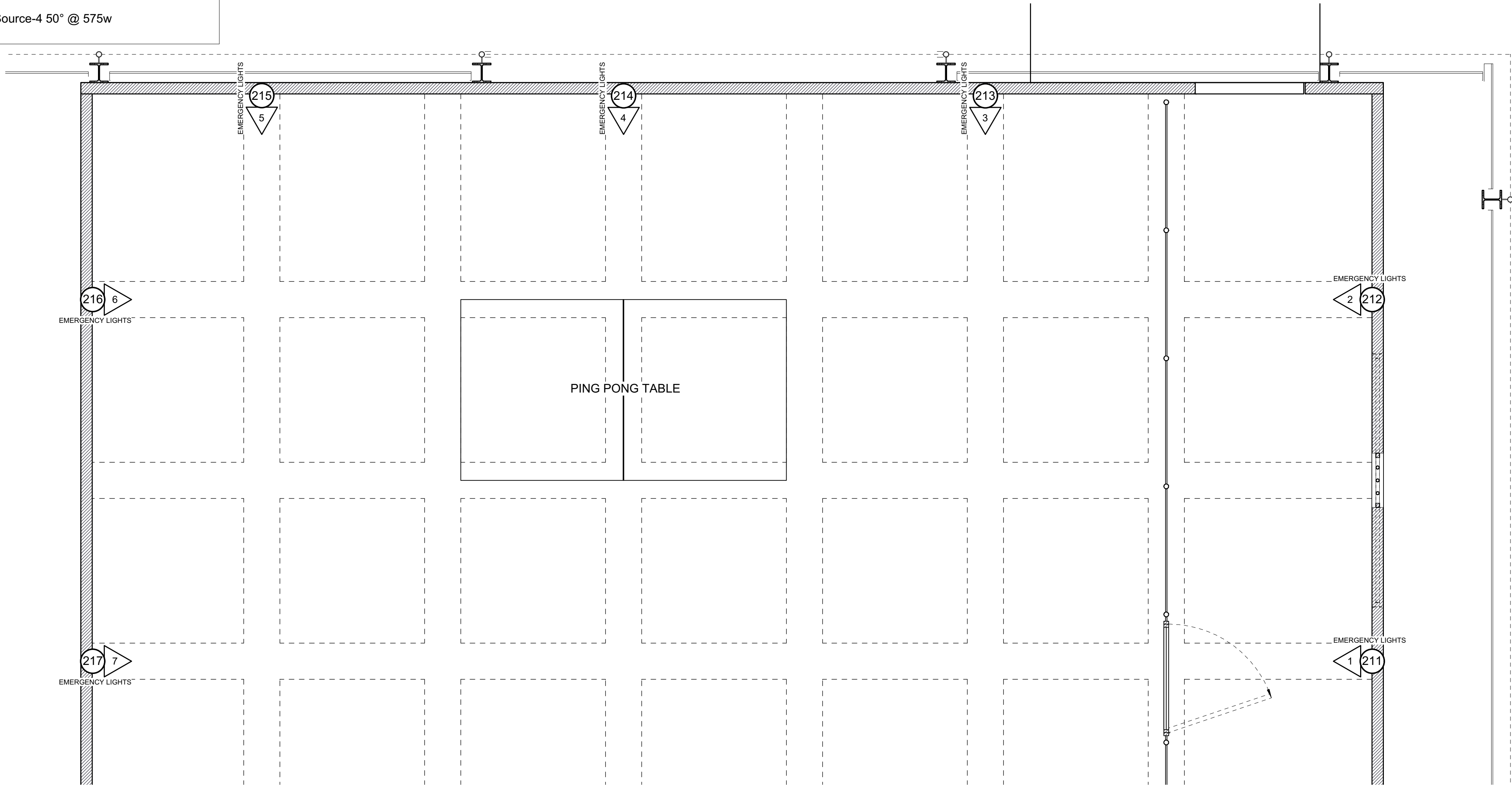




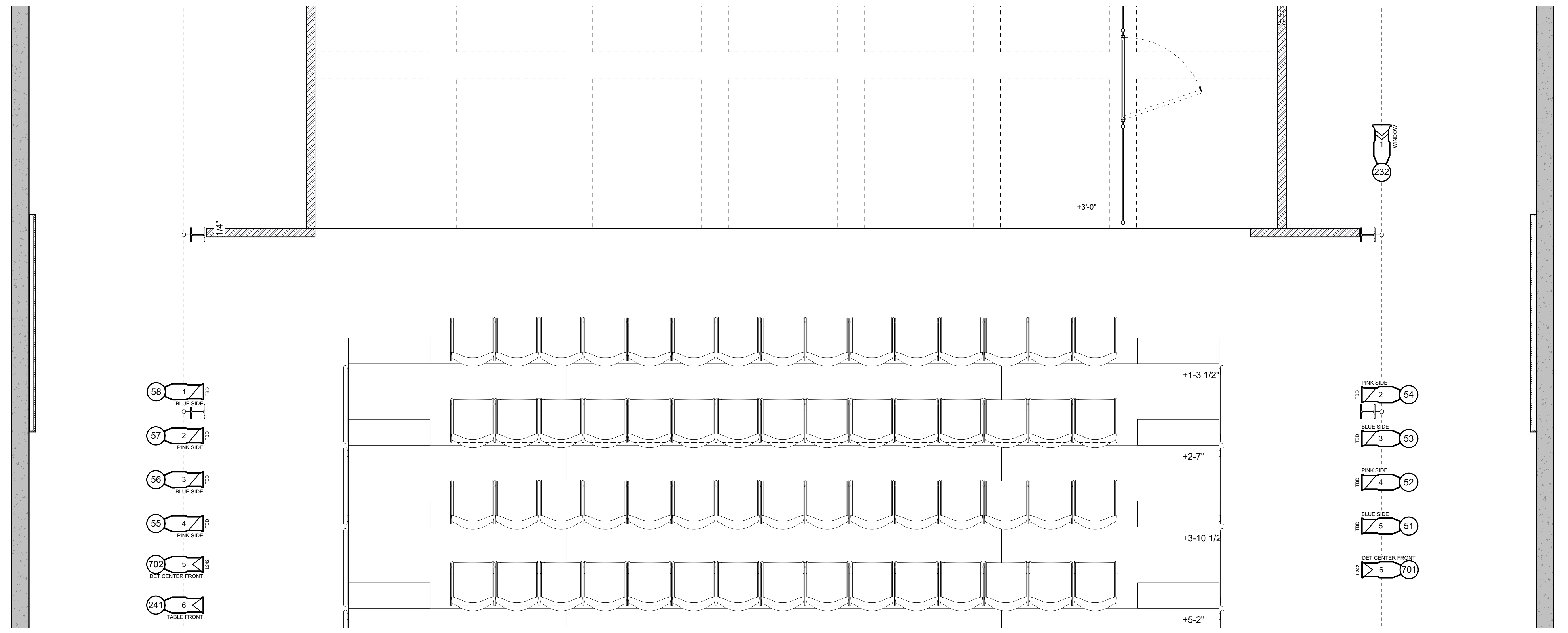
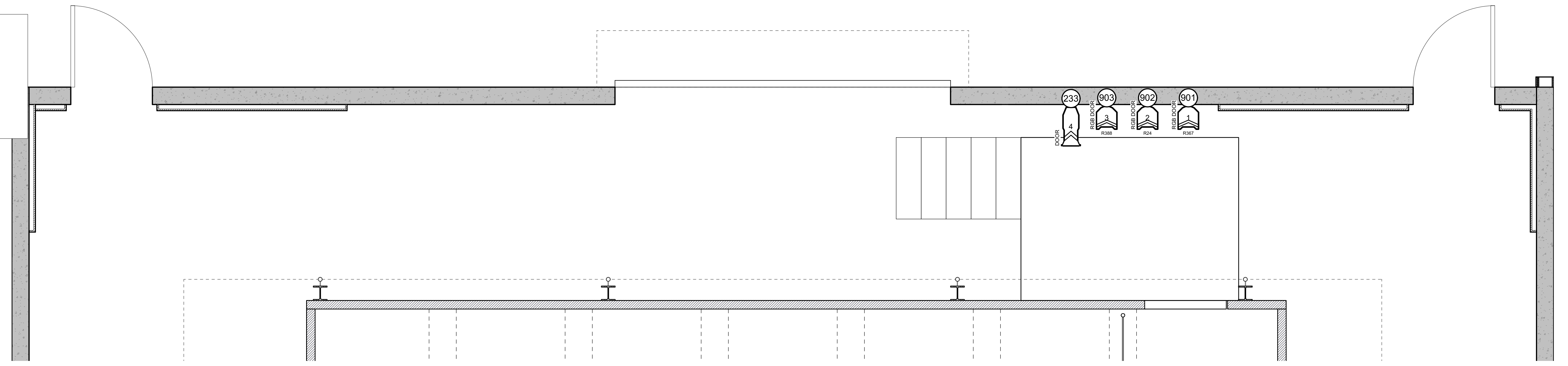



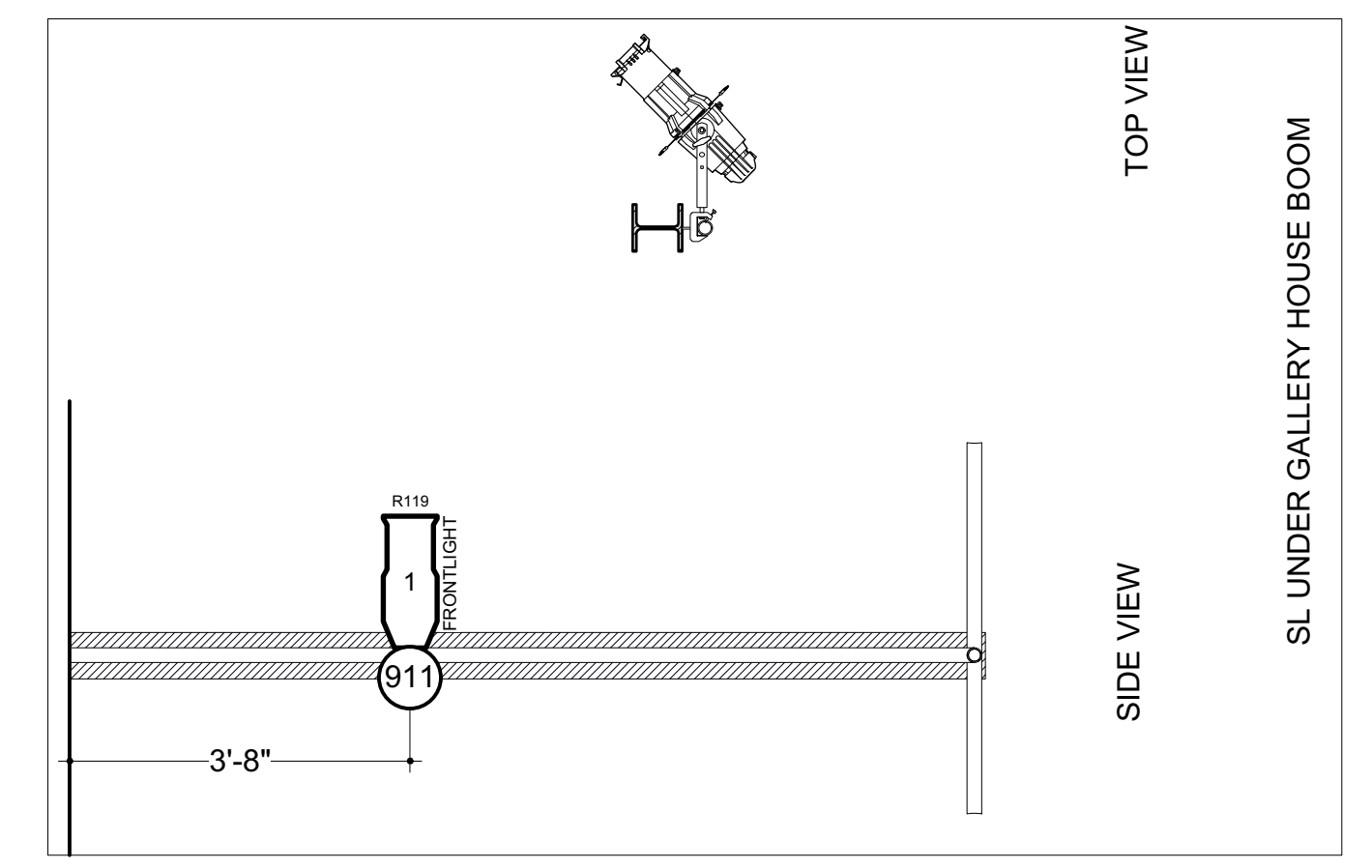
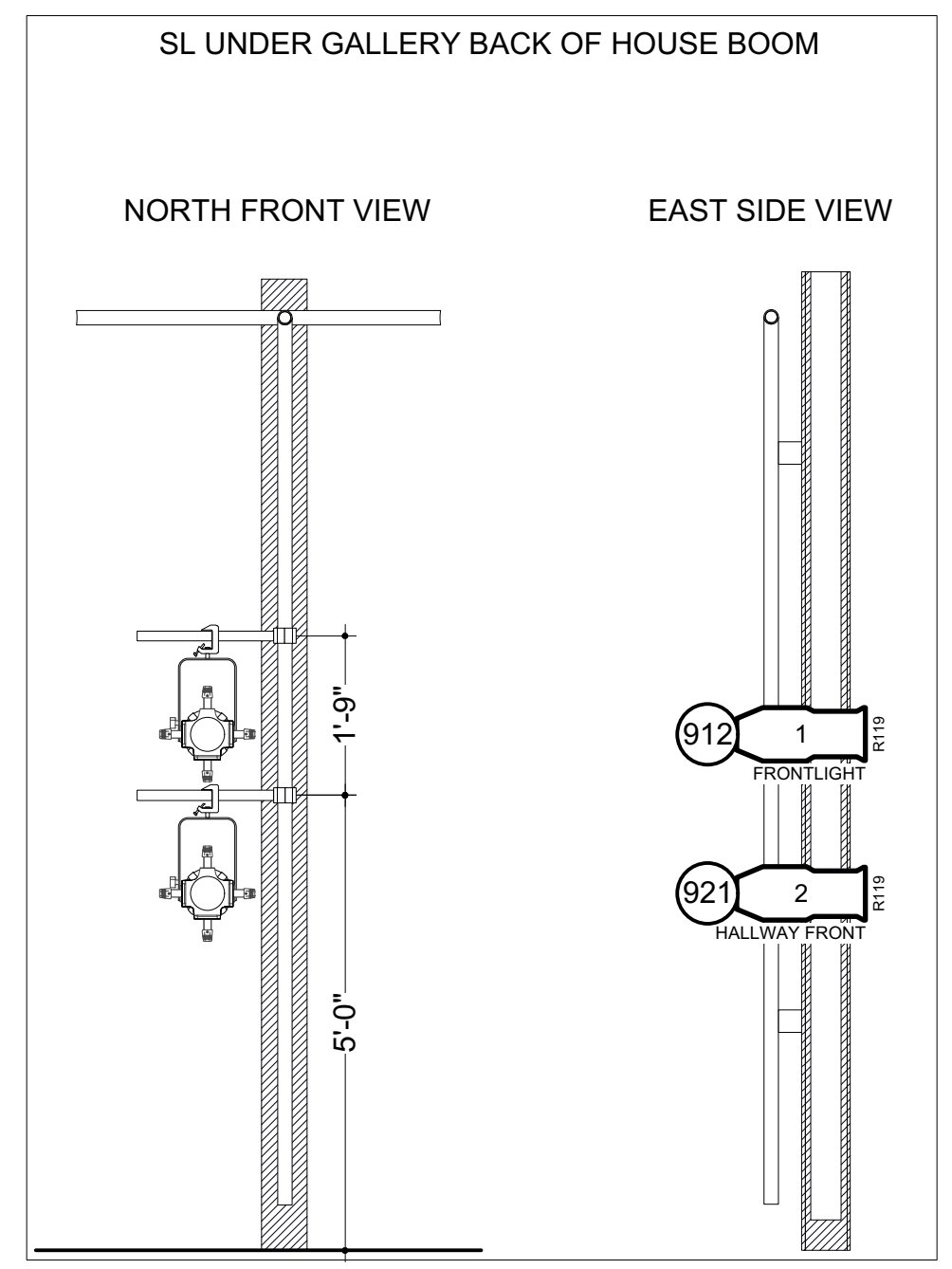
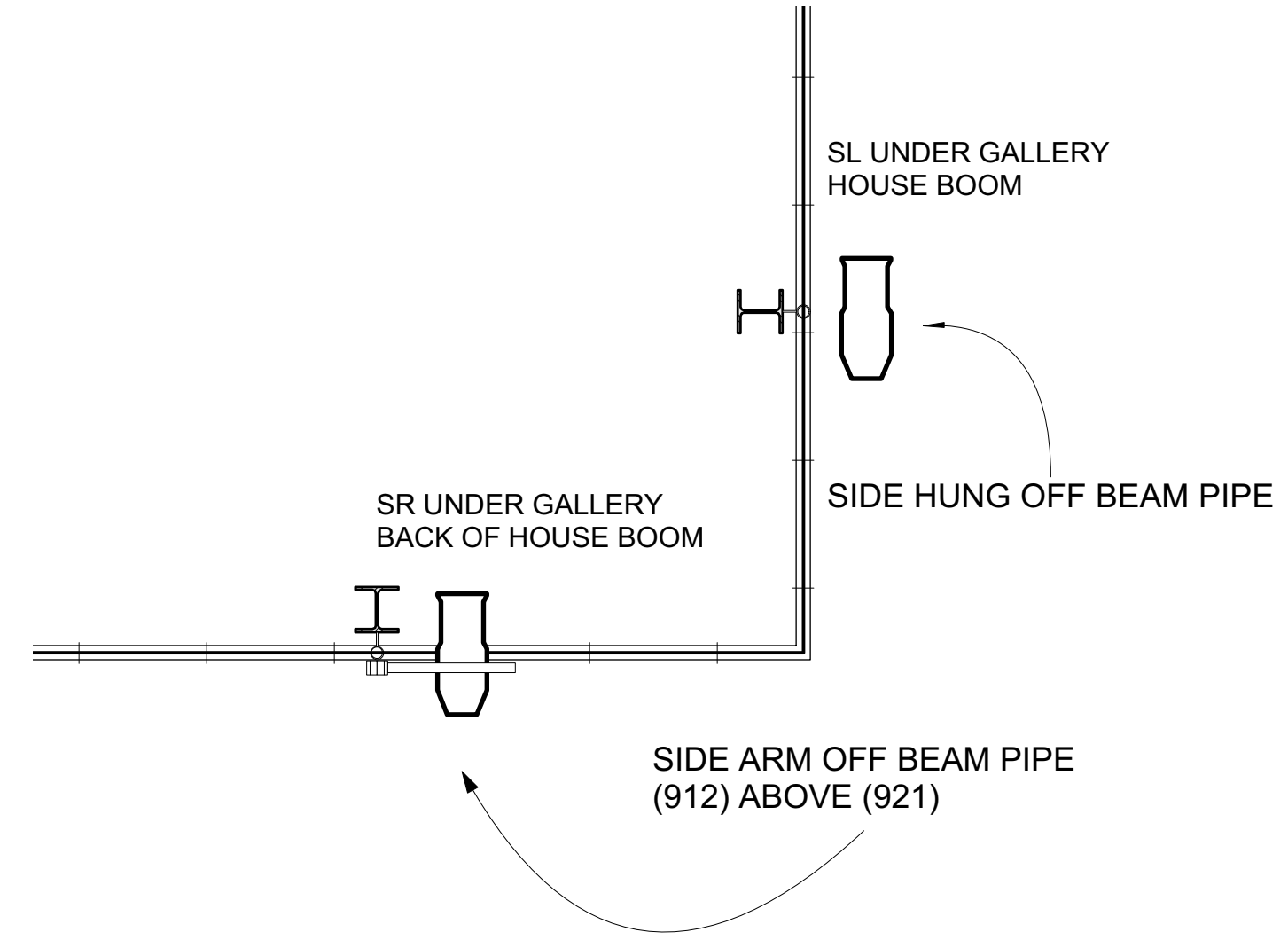
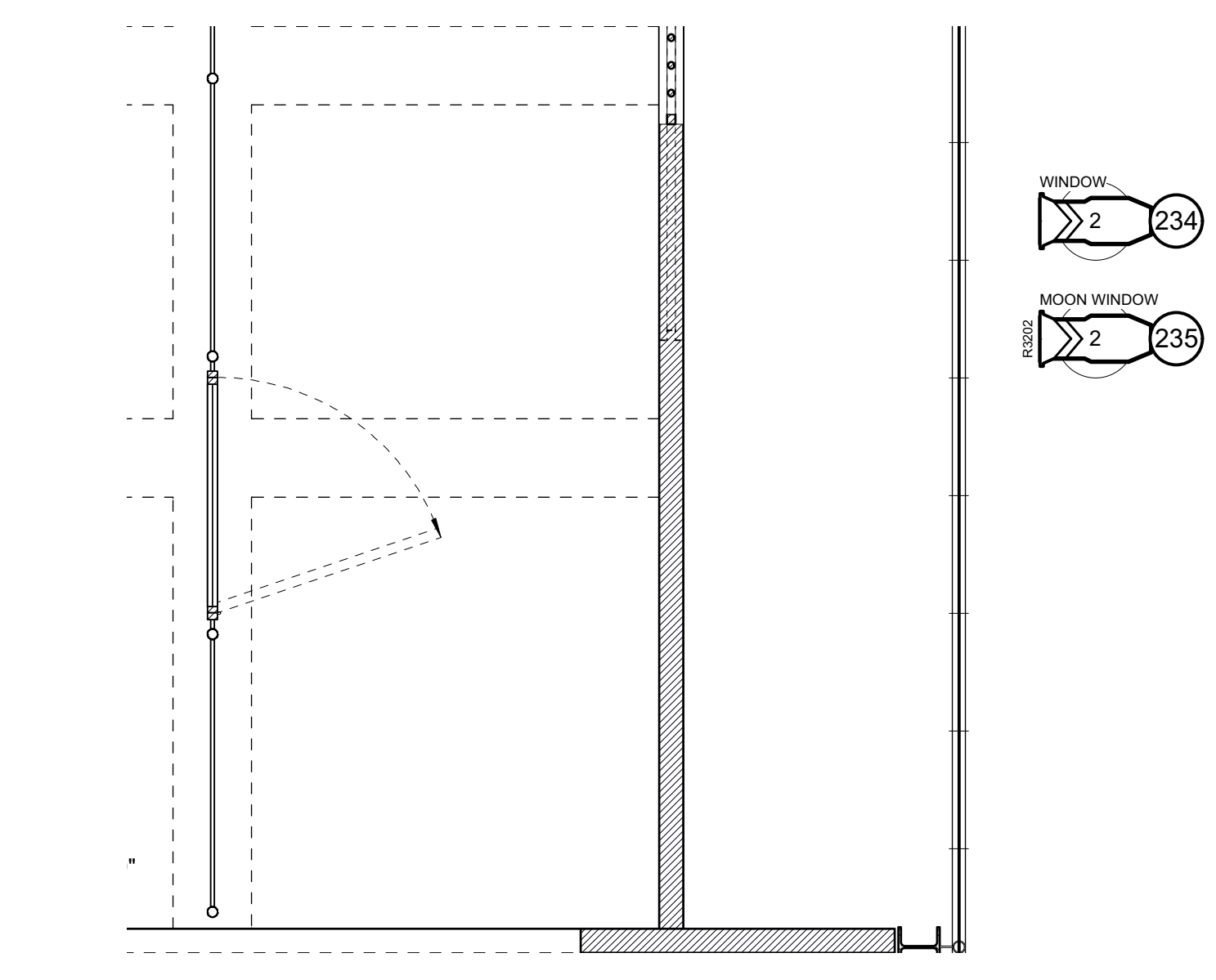
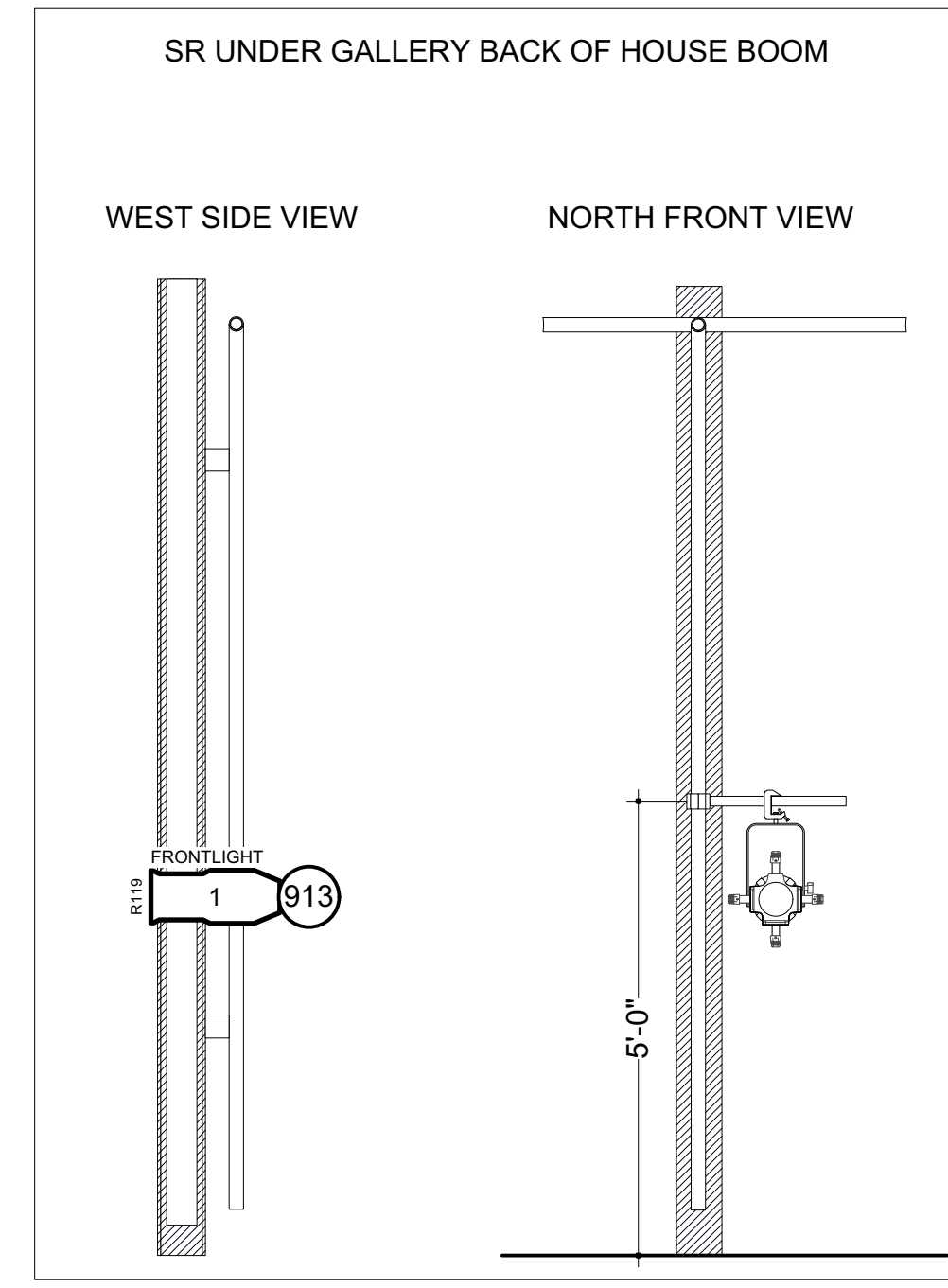
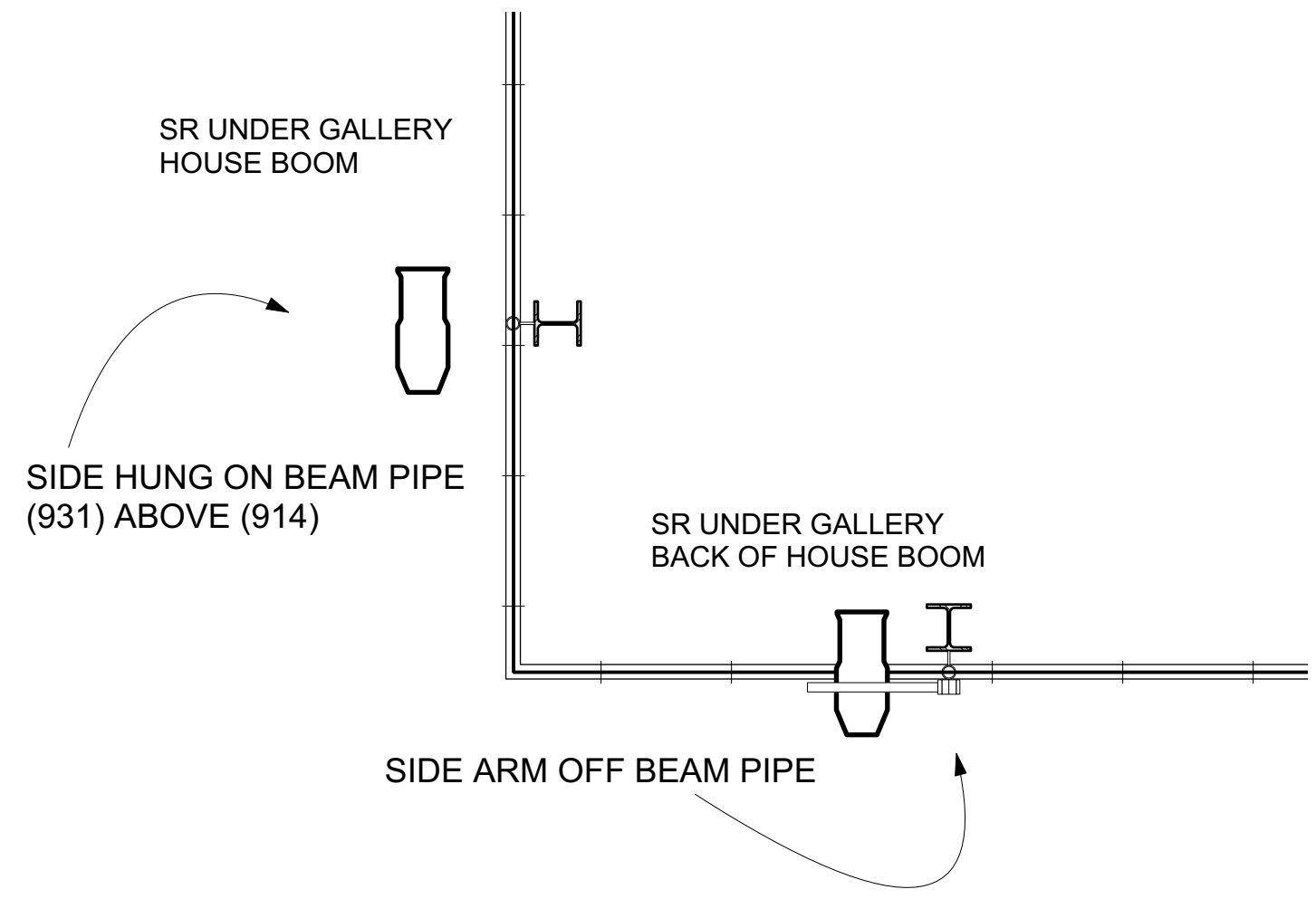
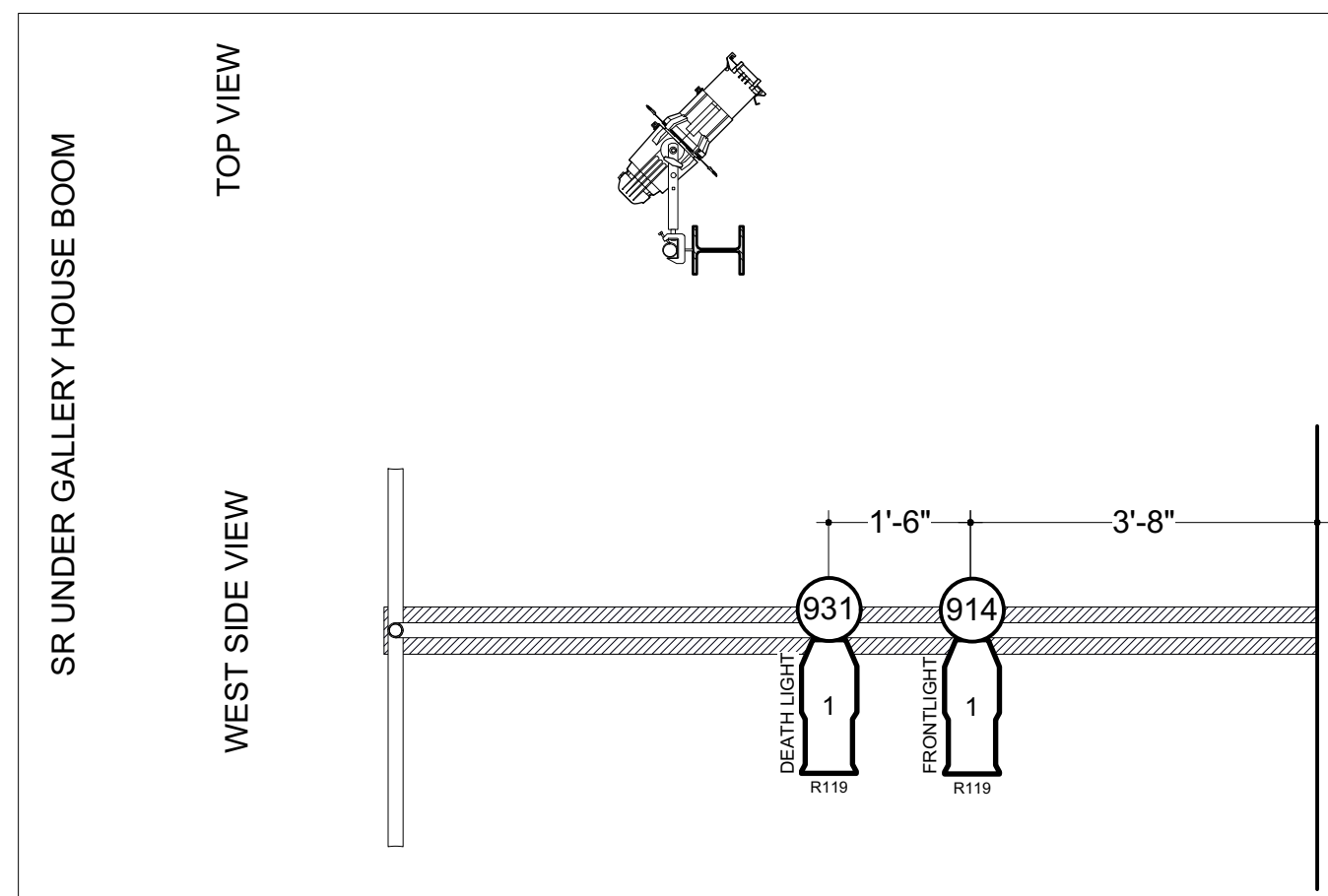
 PRACTICAL
 Altman Soft Lite @ 2kw
 ETC Source-4 50° @ 575w





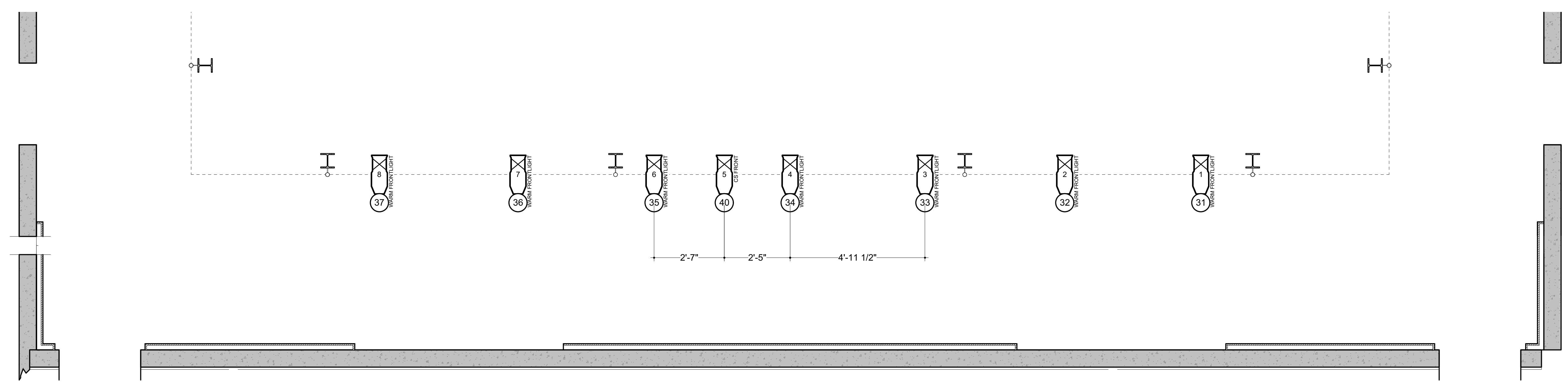
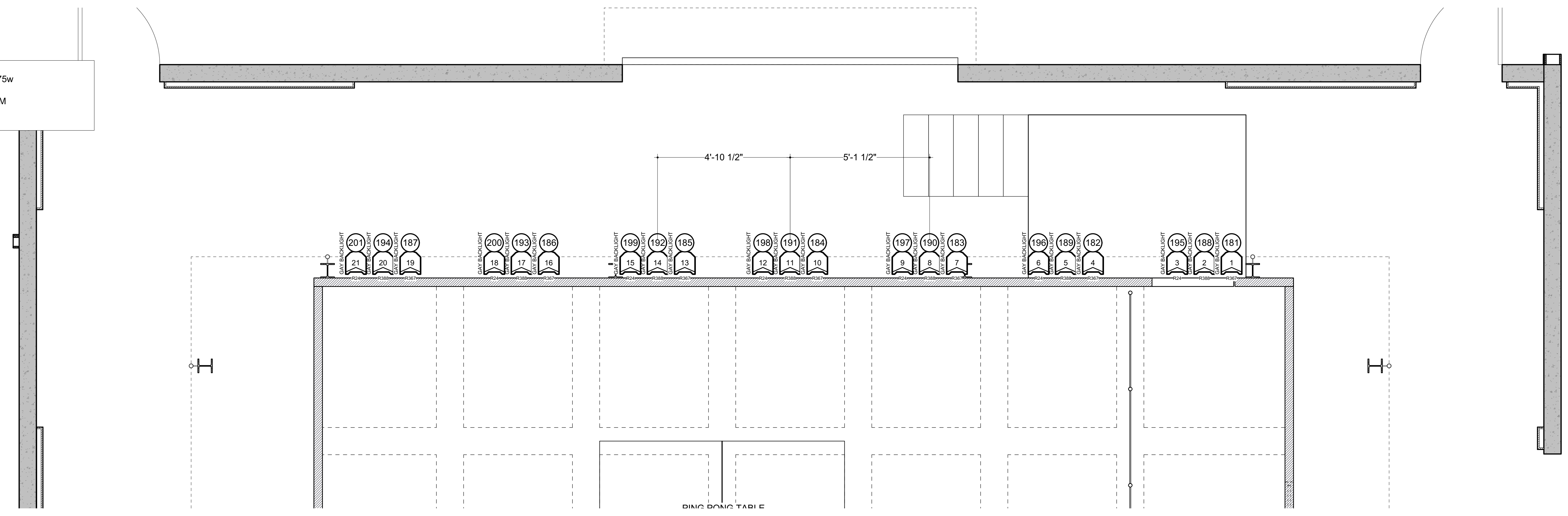
-  ETC Source 4 PAR MCM (XWFL) @ 750w
-  Etc Source 4 70° @ 750w
-  ETC Source-4 50° @ 575w
-  ETC Source 4 26° @ 575w



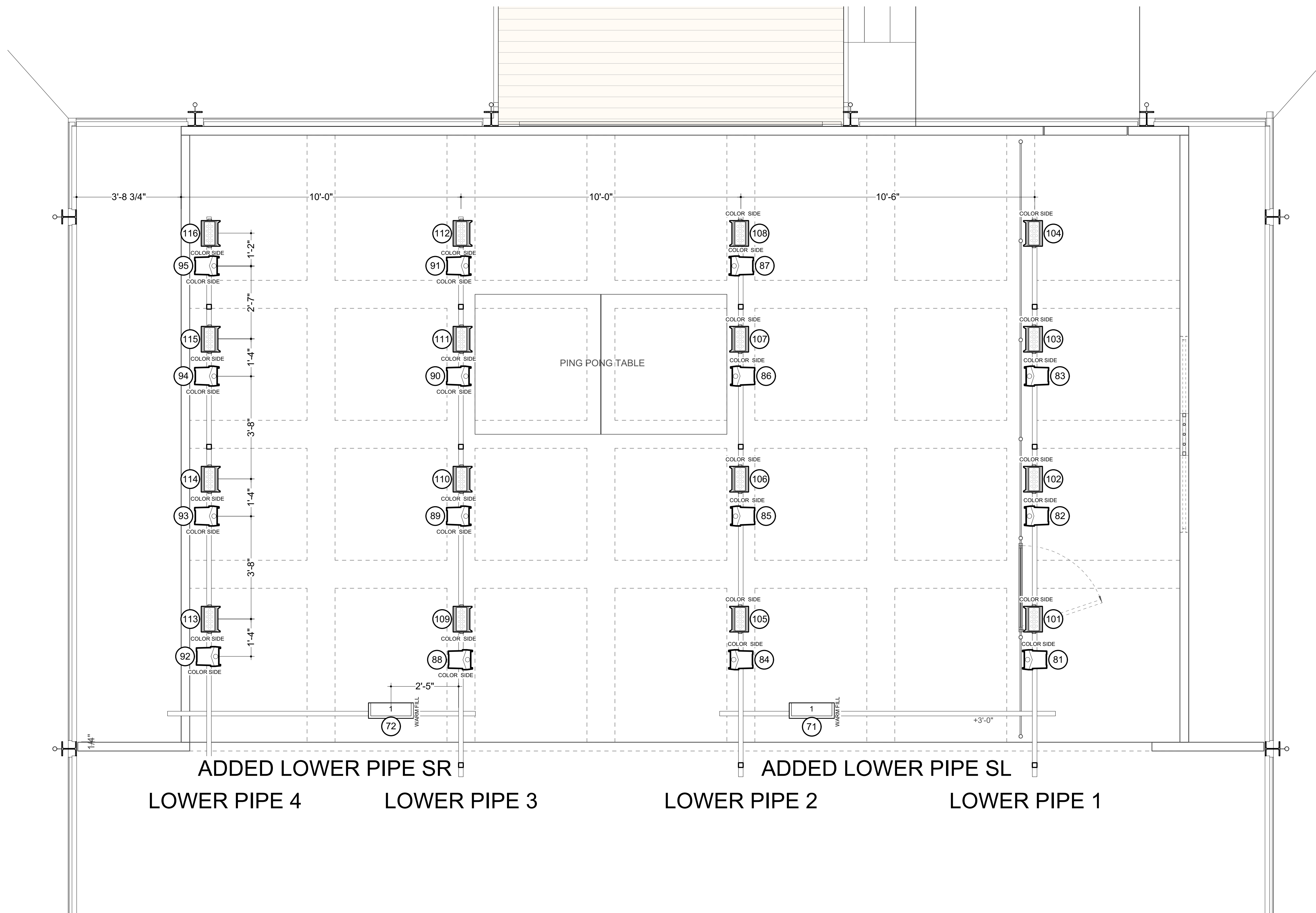
-  ETC Source-4 36° @ 575w
-  ETC Source-4 50° @ 575w
-  Etc Source 4 70° @ 750w





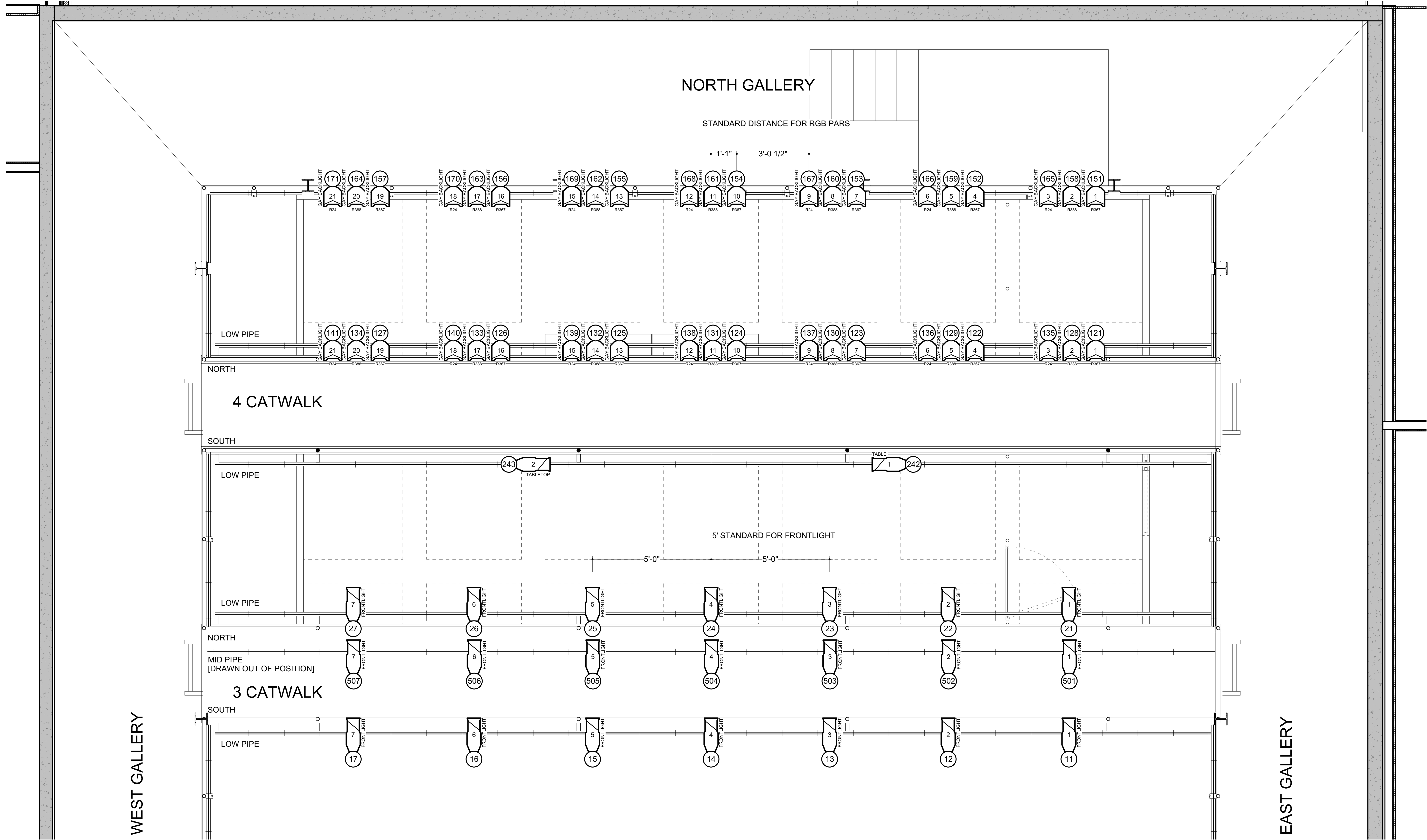
 ETC Source-4 19° @ 575w
 ETC Source 4 PAR MCM (WFL) @ 575w



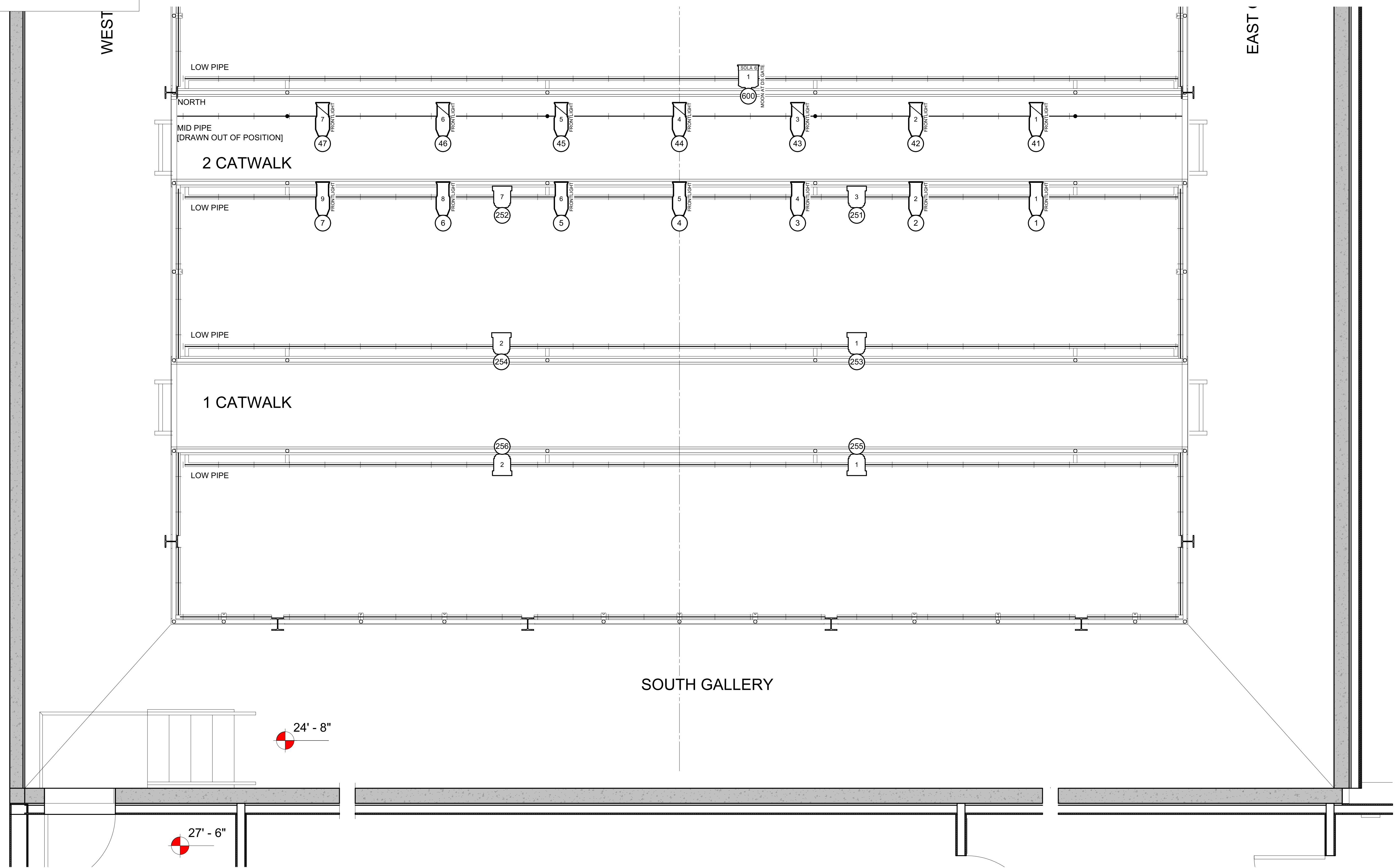
-  Vivid 11 @ 162w
-  D40 Vivid SELR45 @ 110w
-  Altman Soft Lite @ 2kw



 ETC Source 4 PAR MCM (WFL) @ 575w
 ETC Source 4 26° @ 575w



-  Lite Panel Sola 6 Fresnel @ 104w
-  Source 4 Fresnel @ 575w
-  ETC Source-4 36° @ 575w
-  ETC Source 4 26° @ 575w



ADAPTED FROM Shakespeare's Romeo and Juliet
 Catherine Ming T'ien DUFFY DIRECTOR
 Peter Ksander SET DESIGN
 Jenny Ampersand COSTUME DESIGN
 Ry Burke LIGHTING DESIGN
 Sarath Patel SOUND DESIGN

REED COLLEGE PERFORMING ARTS BUILDING
 DIVER STUDIO THEATER
 LIGHT PLOT [GALLERY AND CATWALK 1+2 LEVEL]
 1:24

THESE VIOLENT DELIGHTS