

JARMAN (all this maddening beauty)
by CARIDAD SVICH
Crystal Springs Rhododendron Gardens, Portland, OR

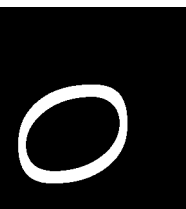
This production investigates the intersection of queerness and nature, by using saturate light, amplified dialogue, and the entire North island of the gardens to conjure Jarman's spirit in an attempt to create queer connection across time and art

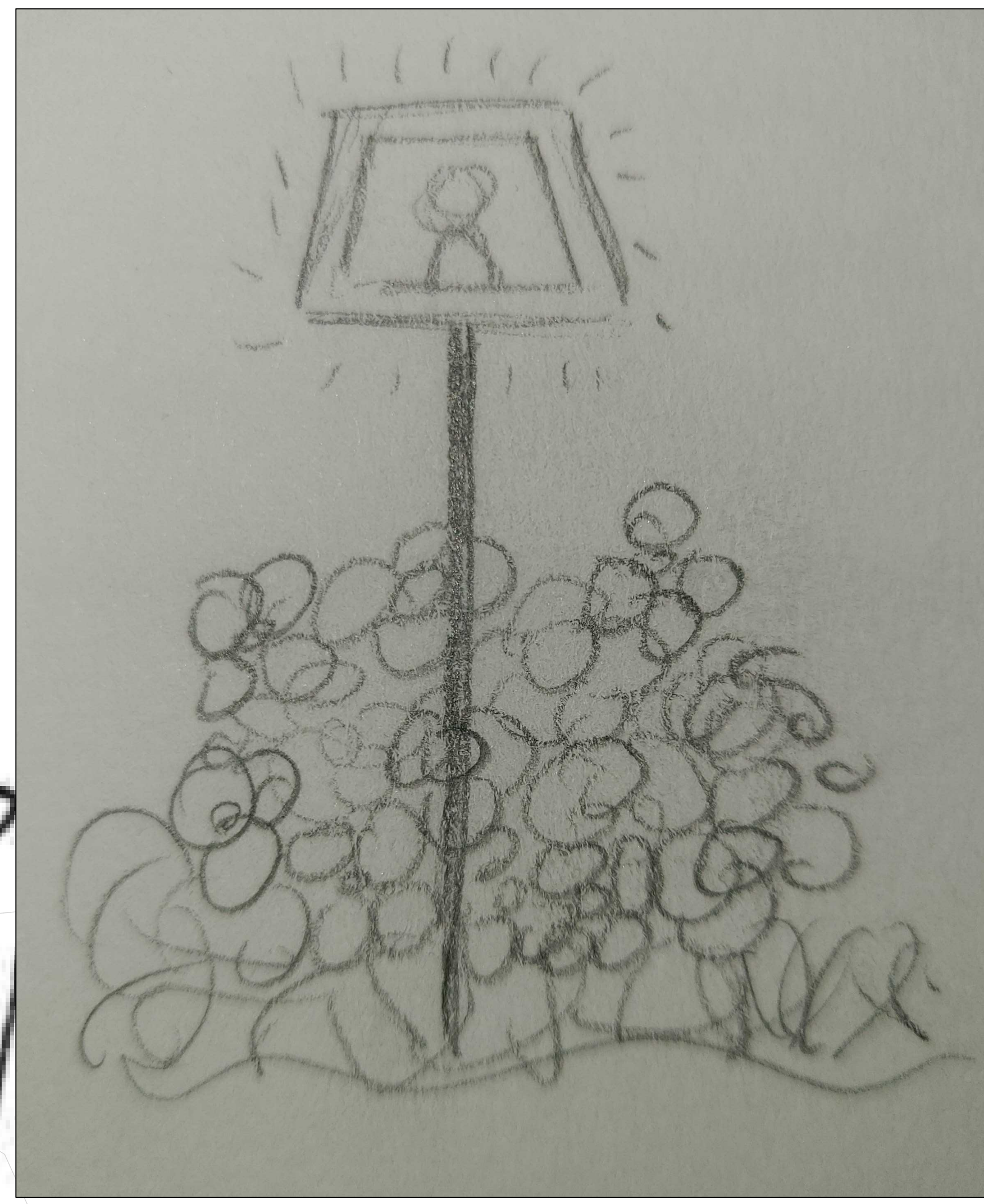
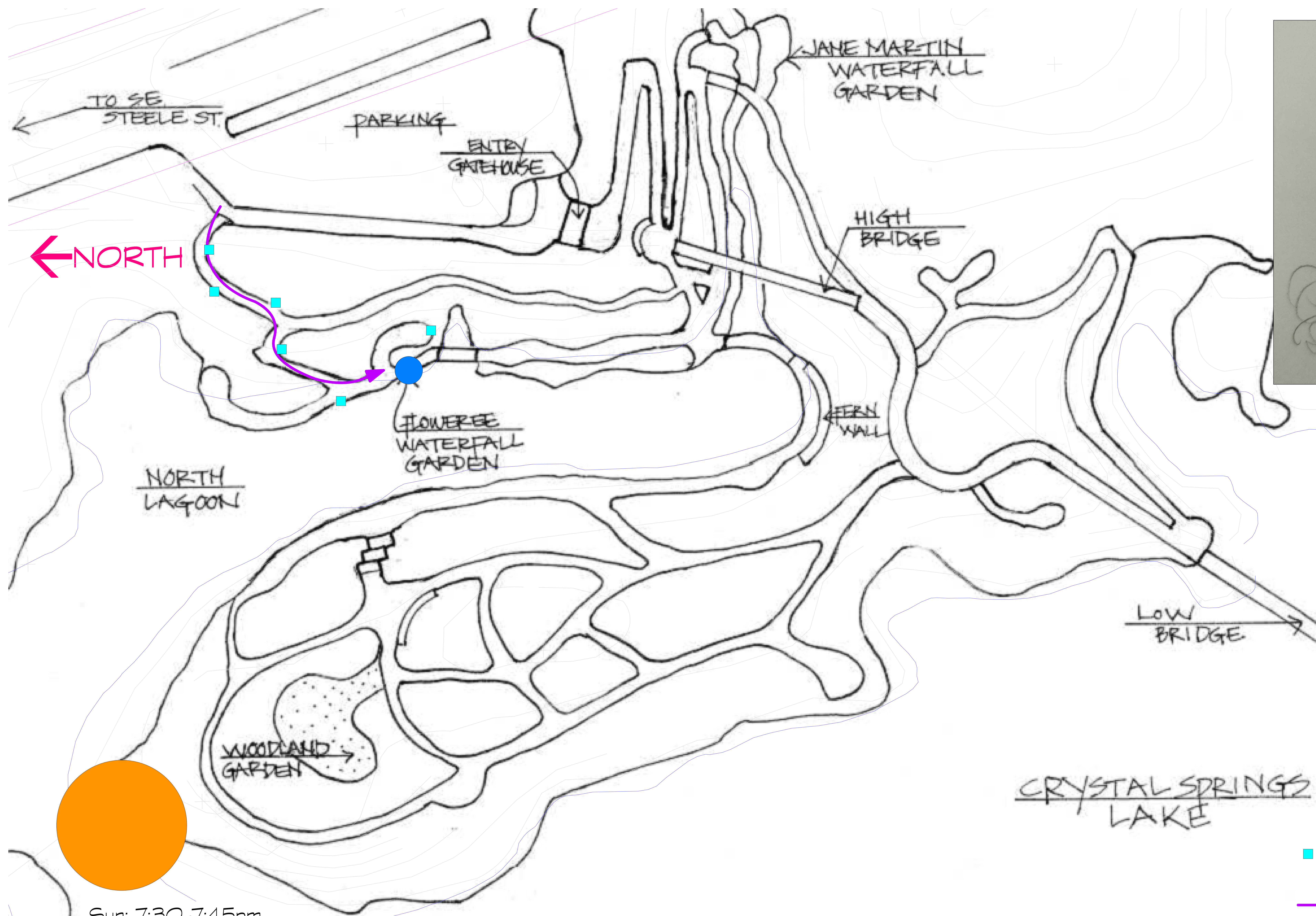
CRYSTAL SPRINGS
LAKE

"Nature abhors Heterosoc
The wounded glades are healing
Nature is Queer"
- Derek Jarman

JARMAN
(All This Maddening Beauty)

COVER PAGE 1:200 Ry Burke LIGHTING DESIGN
Crystal Springs Rhododendron Garden
SE Portland, Oregon





example of light box

- LIGHT BOXES
- AUDIENCE PATH
- FINAL POSITION OF BUDDING ARTIST

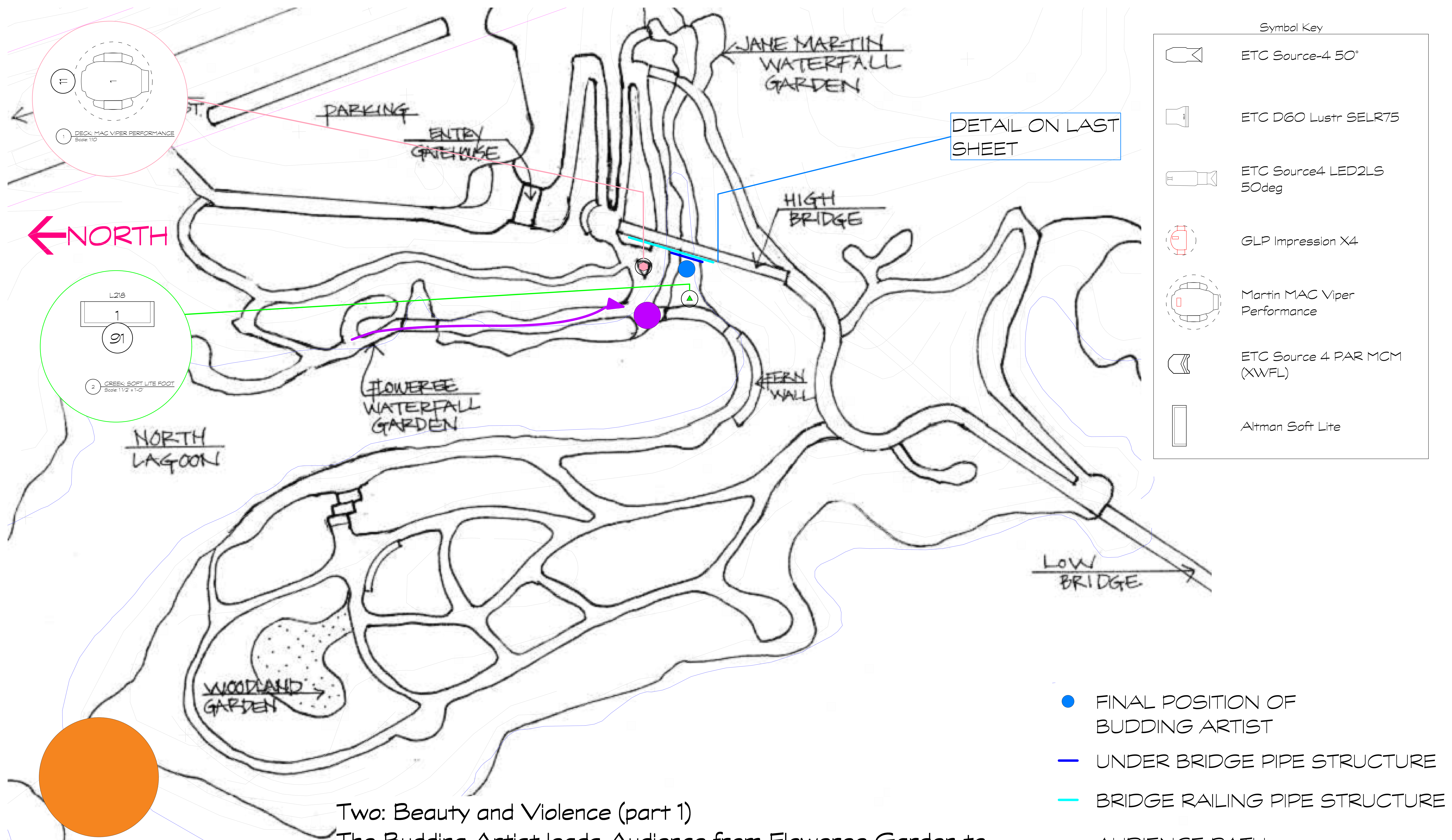
KEY

Sun: 7:30-7:45pm
before sunset

One: The story of a boy
The Budding Artist guides the Audience from the side entrance towards the Floweree Waterfall Garden.
Some text from the script is paired with pictures of Derek Jarman in lightboxes along path, the rest is spoken aloud by the Budding Artist.

Color Journey

Sky
Design



Symbol Key	
	ETC Source-4 50°
	ETC D60 Lustr SELR75
	ETC Source4 LED2LS 50deg
	GLP Impression X4
	Martin MAC Viper Performance
	ETC Source 4 PAR MCM (XWFL)
	Altman Soft Lite

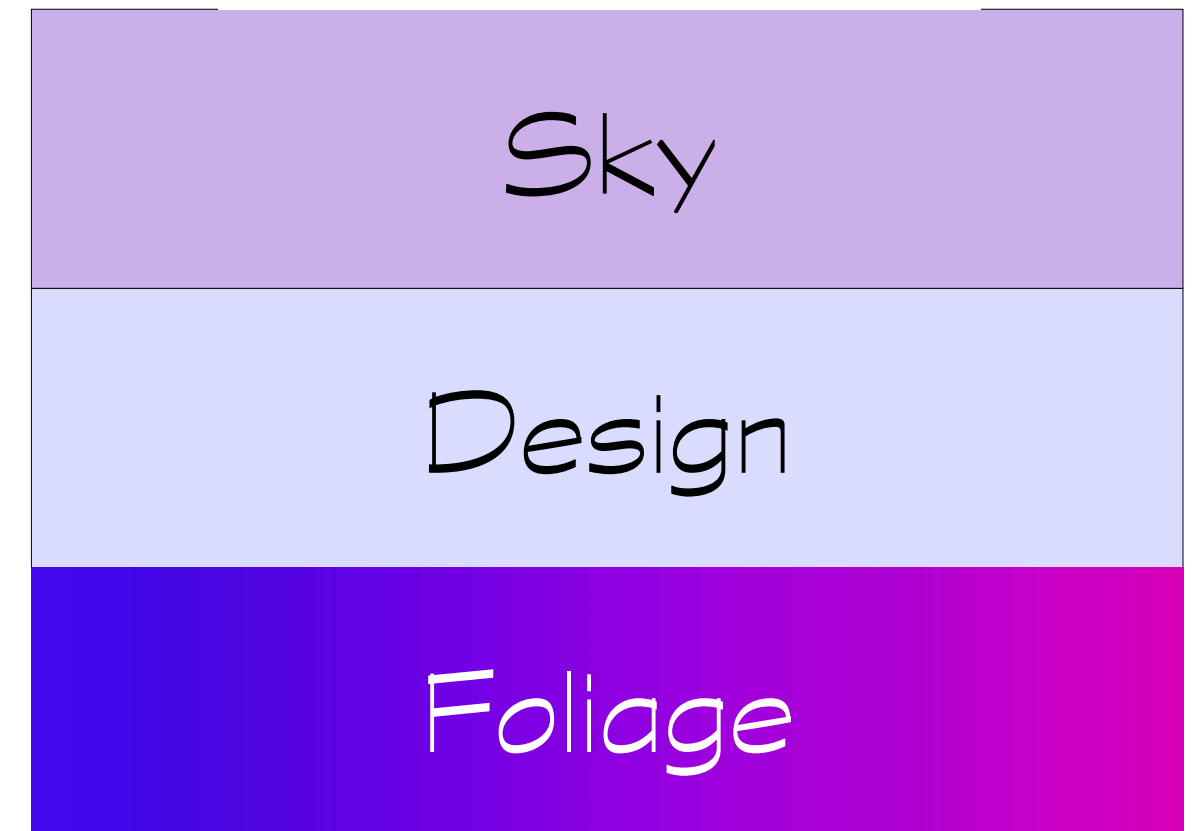
- FINAL POSITION OF BUDDING ARTIST
- UNDER BRIDGE PIPE STRUCTURE
- BRIDGE RAILING PIPE STRUCTURE
- AUDIENCE PATH
- FINAL POSITION OF AUDIENCE

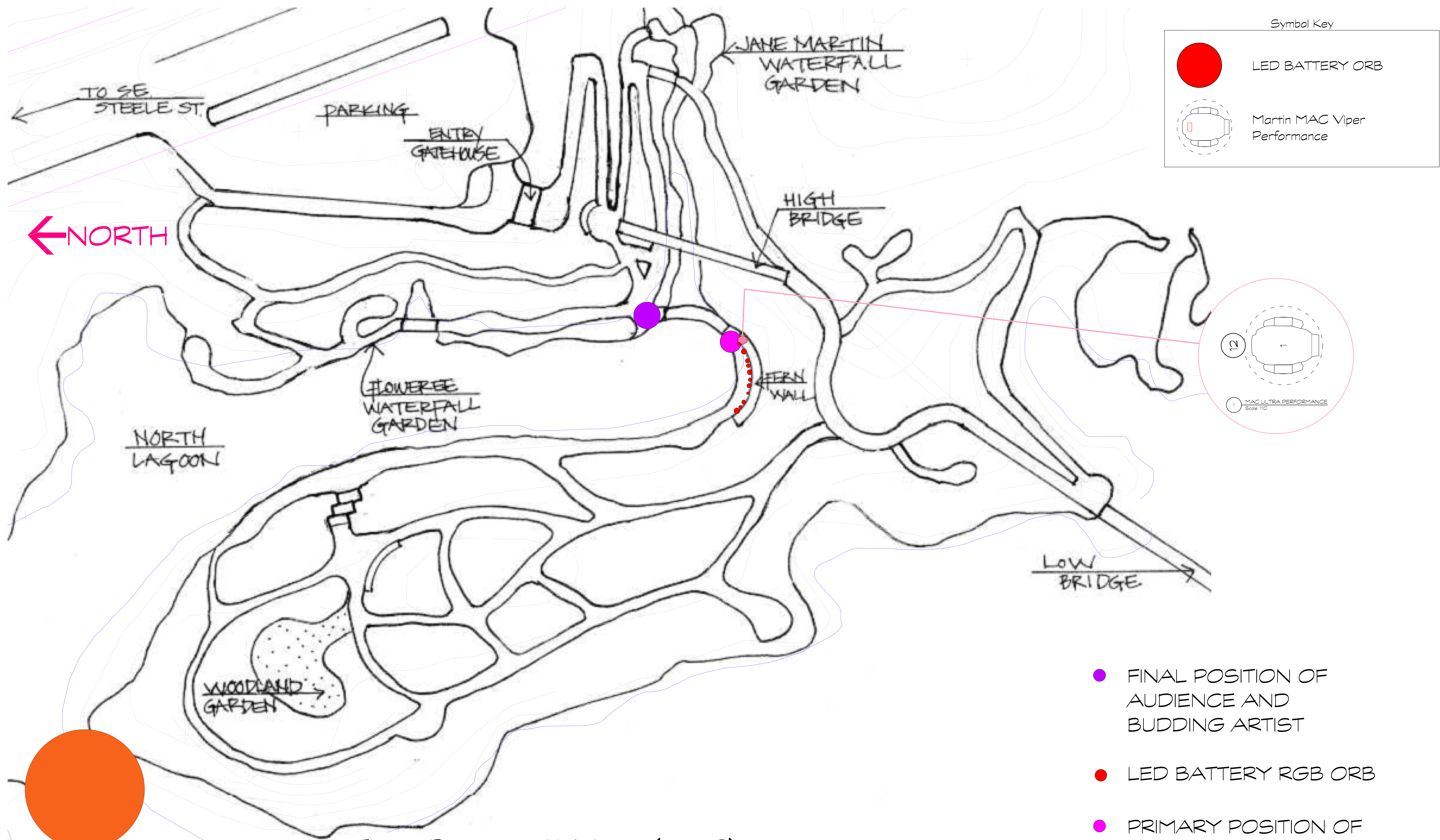
KEY

Two: Beauty and Violence (part 1)
The Budding Artist leads Audience from Flowerree Garden to viewing spot below High Bridge. The Budding Artist falls into memory and wanders to acting spot in creek under High Bridge Arch.
He is frontlit by Soft Lite (91) and Mac Viper (11), and backlight by Arch pipe Pars. Surrounding foliage is flooded with color from Railing LEDs.

Sun: 7:45-7:55pm
before sunset

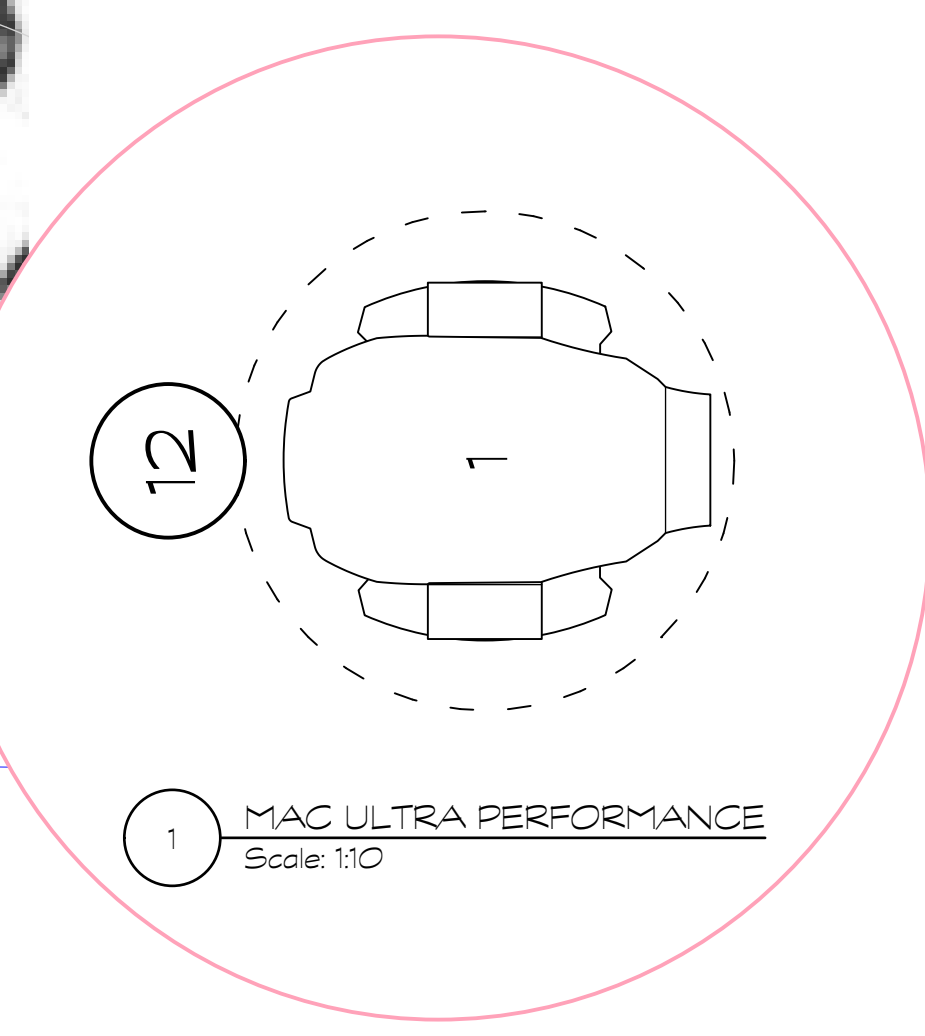
Color Journey





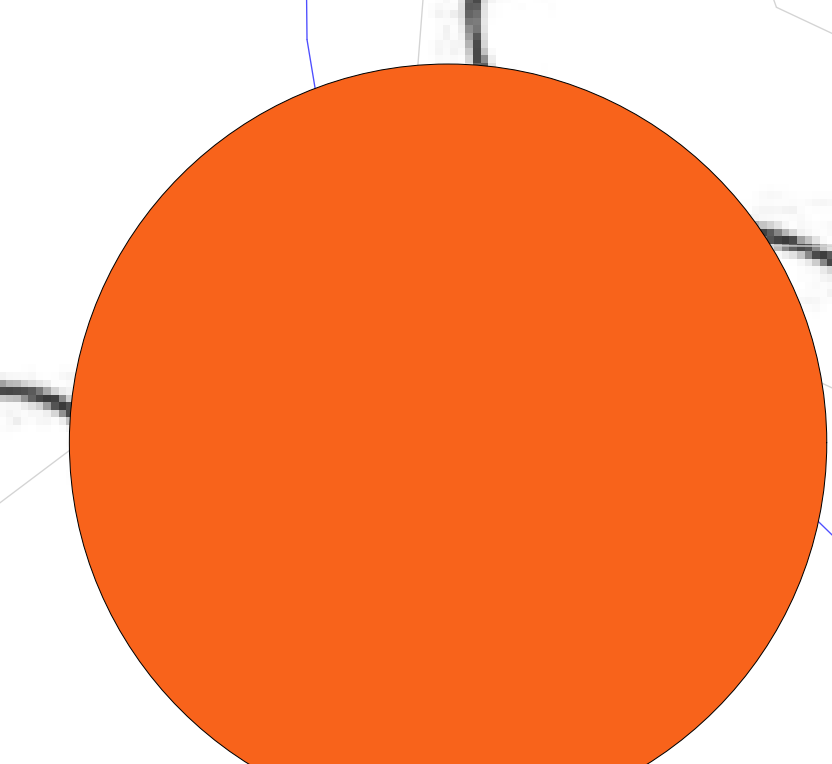
Symbol Key

- LED BATTERY ORB
- Martin MAC Viper Performance



- FINAL POSITION OF AUDIENCE AND BUDDING ARTIST
- LED BATTERY RGB ORB
- PRIMARY POSITION OF ARTIST
- MARTIN MAC VIPER PERFORMANCE

KEY



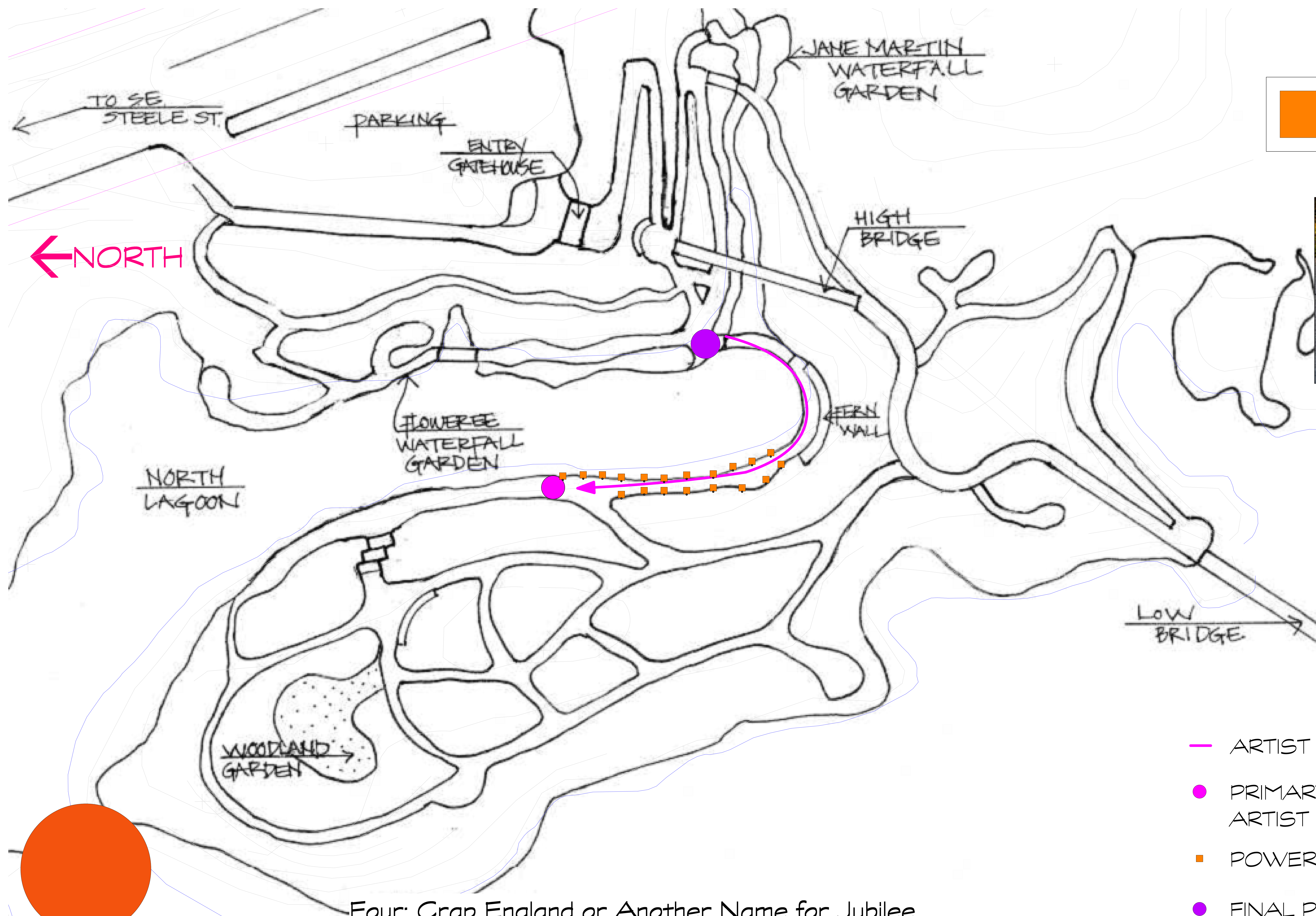
Sun: 7:55-8:05pm
almost sunset

Color Journey

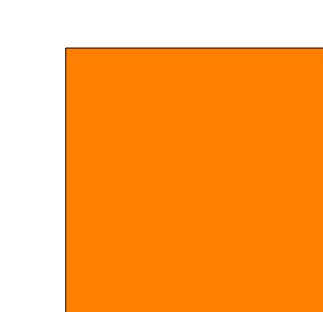
Sky

Design

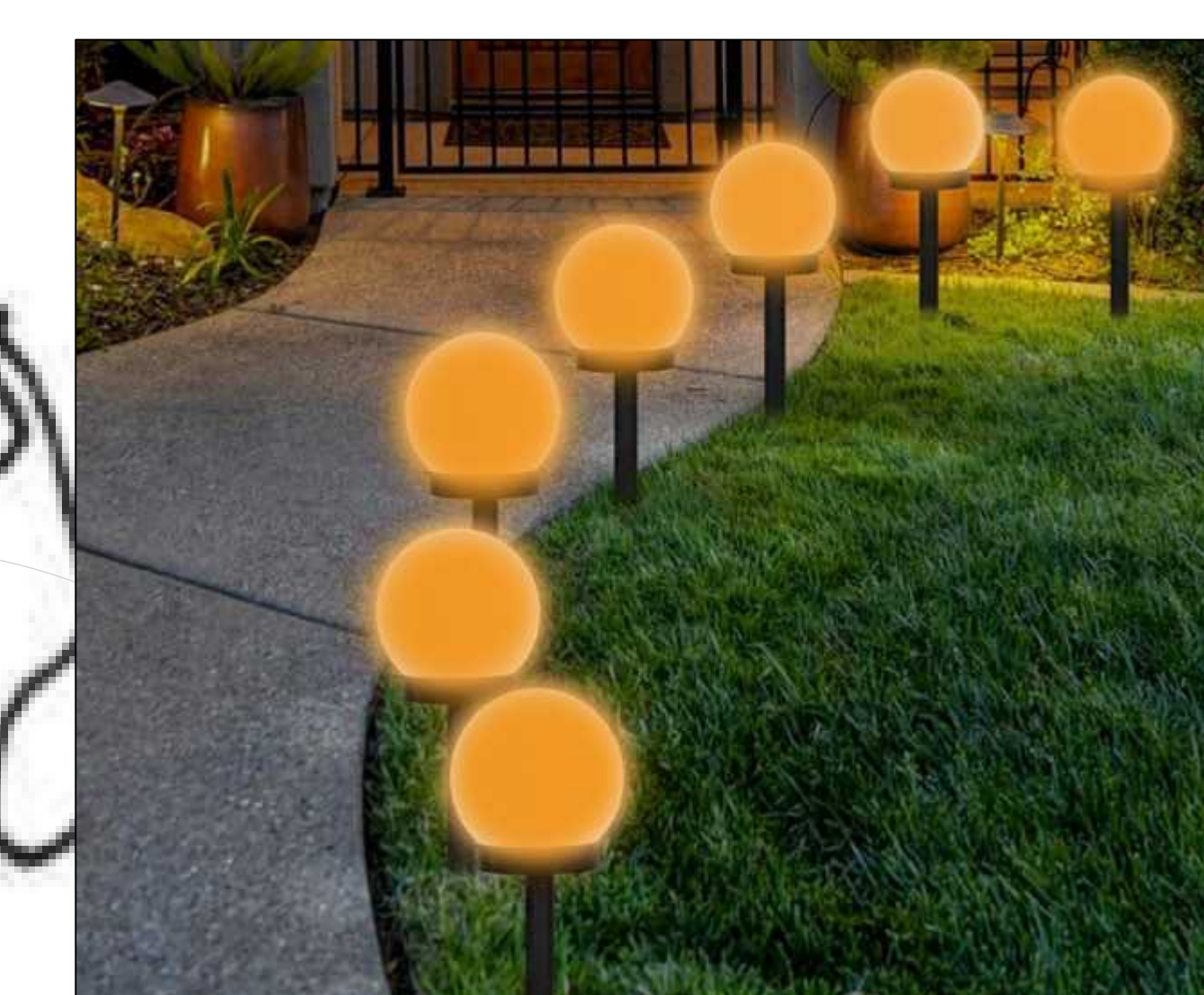
Three: Beauty and Violence (part 2)
The Artist is conjured by his movie, on the other side of the bridge by the fern wall. The Budding Artist and Audience watch him from across the creek.
The Artist is sidelit and backlit by Viper (12) on top of Fern Wall, and interacts with LED orbs set in Fern Wall planters.



Symbol Key

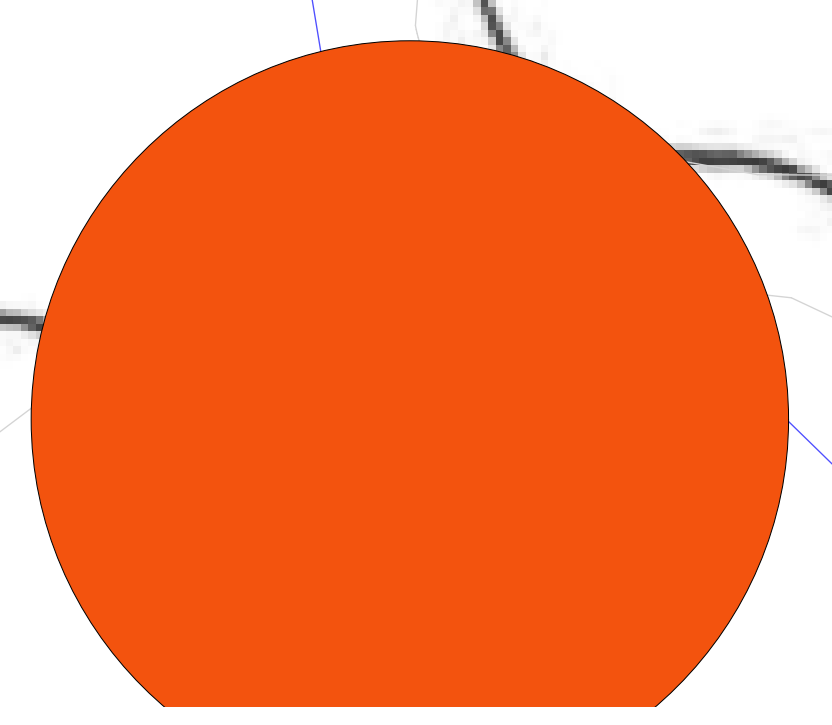


POWERED PATH LIGHT



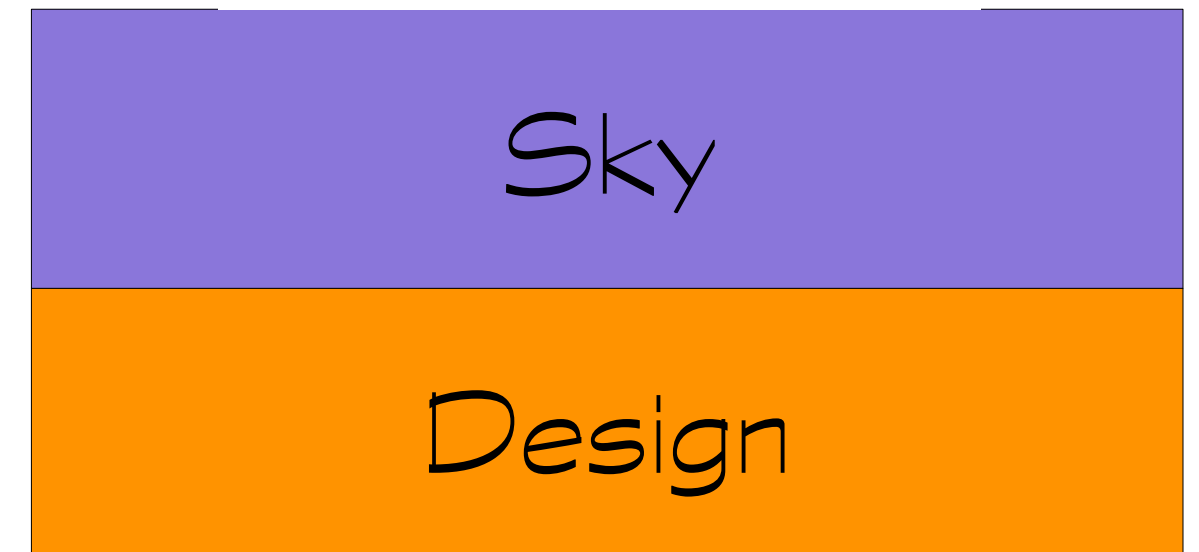
example of path light

← NORTH



Sun: 8:05-8:15pm
almost sunset

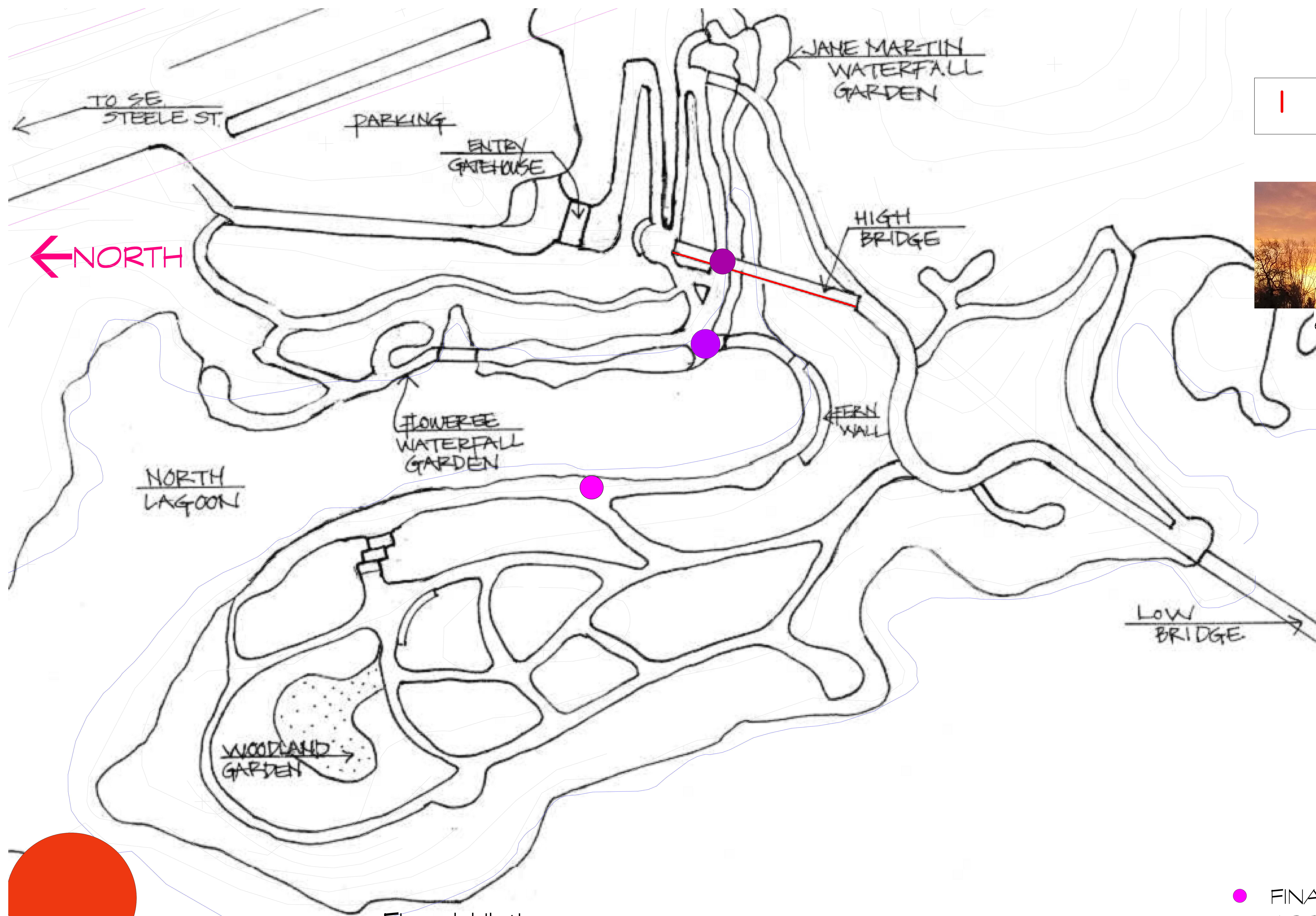
Color Journey



- ARTIST PATH
- PRIMARY POSITION OF ARTIST
- POWERED PATH LIGHT
- FINAL POSITION OF AUDIENCE AND BUDDING ARTIST

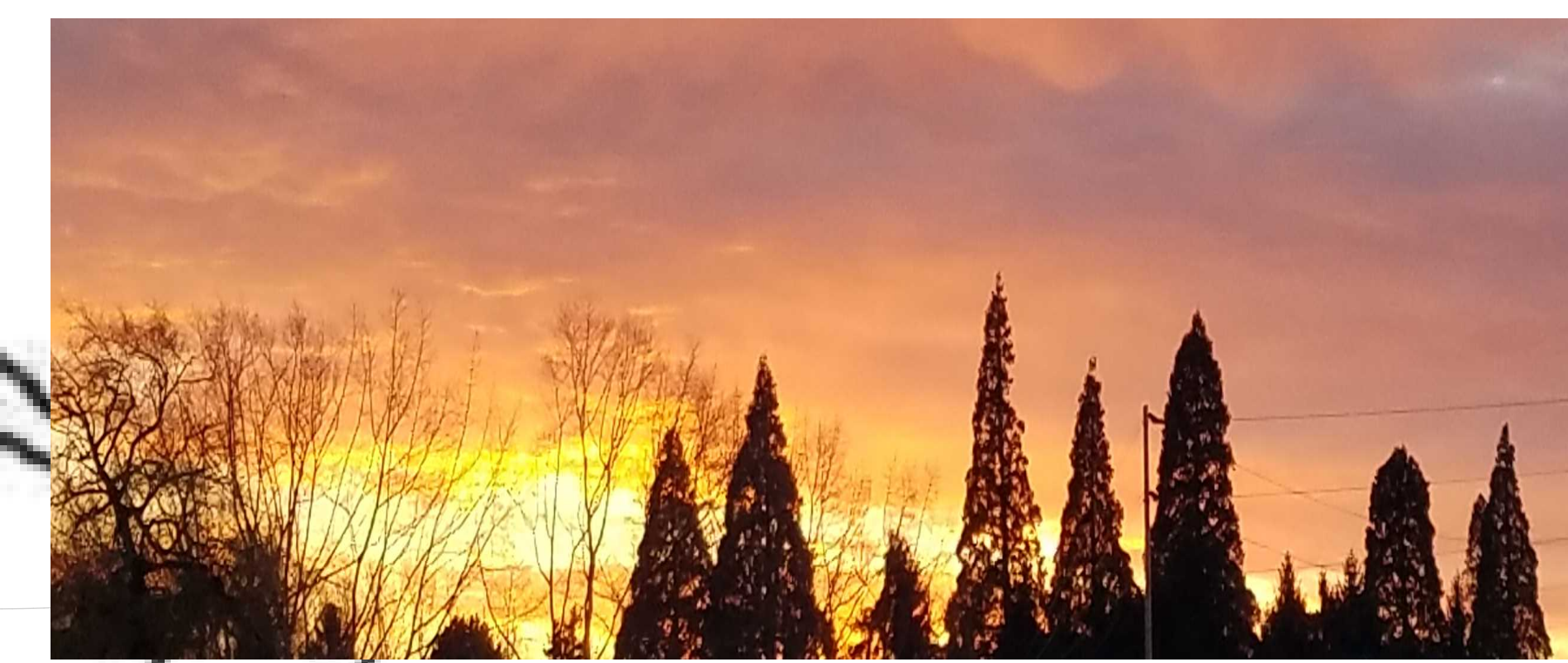
KEY

Four: Crap England or Another Name for Jubilee
The Artist walks towards the Sun just above the trees, and stops to watch the sky. As he passes by, path lights turn on. The Budding Artist and Audience watch his actions and the sky from their spot as part four is heard over speakers in the foliage.



Symbol Key

LED TAPE



example of Sunset

- FINAL POSITION OF ARTIST
- LED TAPE

KEY

Sun: 8:15-8:20pm
start of sunset

Color Journey

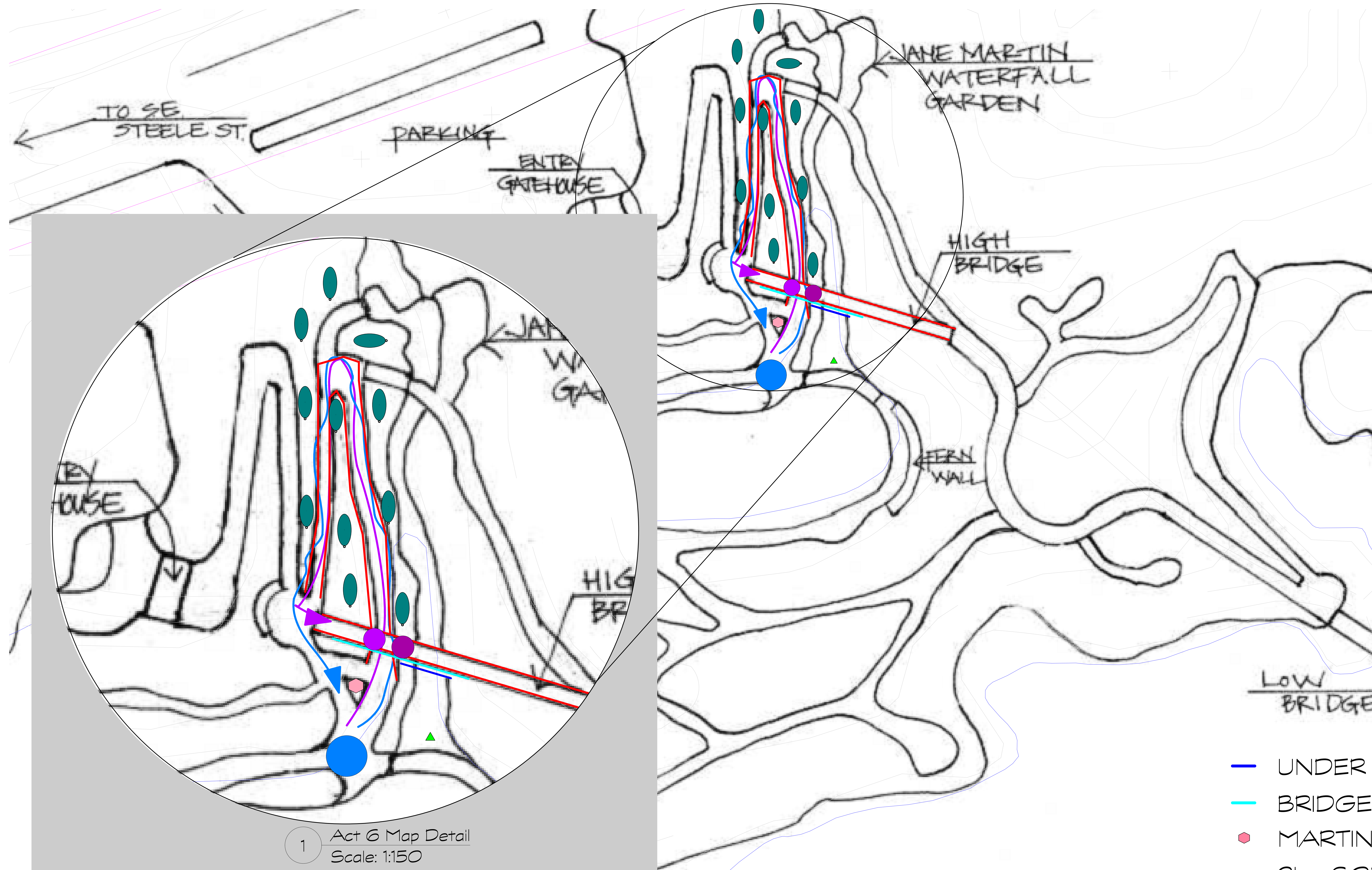
Sky

Design

Five: Jubilation

The Lover appears on the High Bridge and watches the Artist watching the Sunset. The Budding Artist and Audience remain in place and hear the Lover's voice through speakers.

The Lover's face is lit by LED tape on North railing of High Bridge, matching the sunset colors.



Symbol Key	
	LED TAPE
	TREE LIGHTS
	ETC Source-4 50°
	ETC D60 Lustr SELR75
	ETC Source4 LED2LS 50deg
	GLP Impression X4
	Martin MAC Viper Performance
	ETC Source 4 PAR MCM (XWFL)
	Altman Soft Lite

- UNDER BRIDGE PIPE STRUCTURE
- BRIDGE RAILING PIPE STRUCTURE
- MARTIN MAC VIPER PERFORMANCE
- ▲ 2kw SOFT LITE
- BUDDING ARTIST PATH
- AUDIENCE PATH
- LED TAPE
- CHRISTMAS LIGHTS IN TREES
- FINAL POSITION OF BUDDING ARTIST
- FINAL POSITION OF LOVER
- FINAL POSITION OF AUDIENCE

KEY

Six: Blasted Earth and the sea of all dreams (part 1)

The Budding Artist is swept up in his memories and leads the Audience along the path. The Audience follows, ending up on the High Bridge next to the Lover, watching from above as the Budding Artist returns to the creek.

The path is lined with LED tape and trees draped in string lights, both warm white. The Budding Artist is then frontlit by High Bridge moving lights.

Sun: 8:20-8:35pm
start of sunset

Color Journey

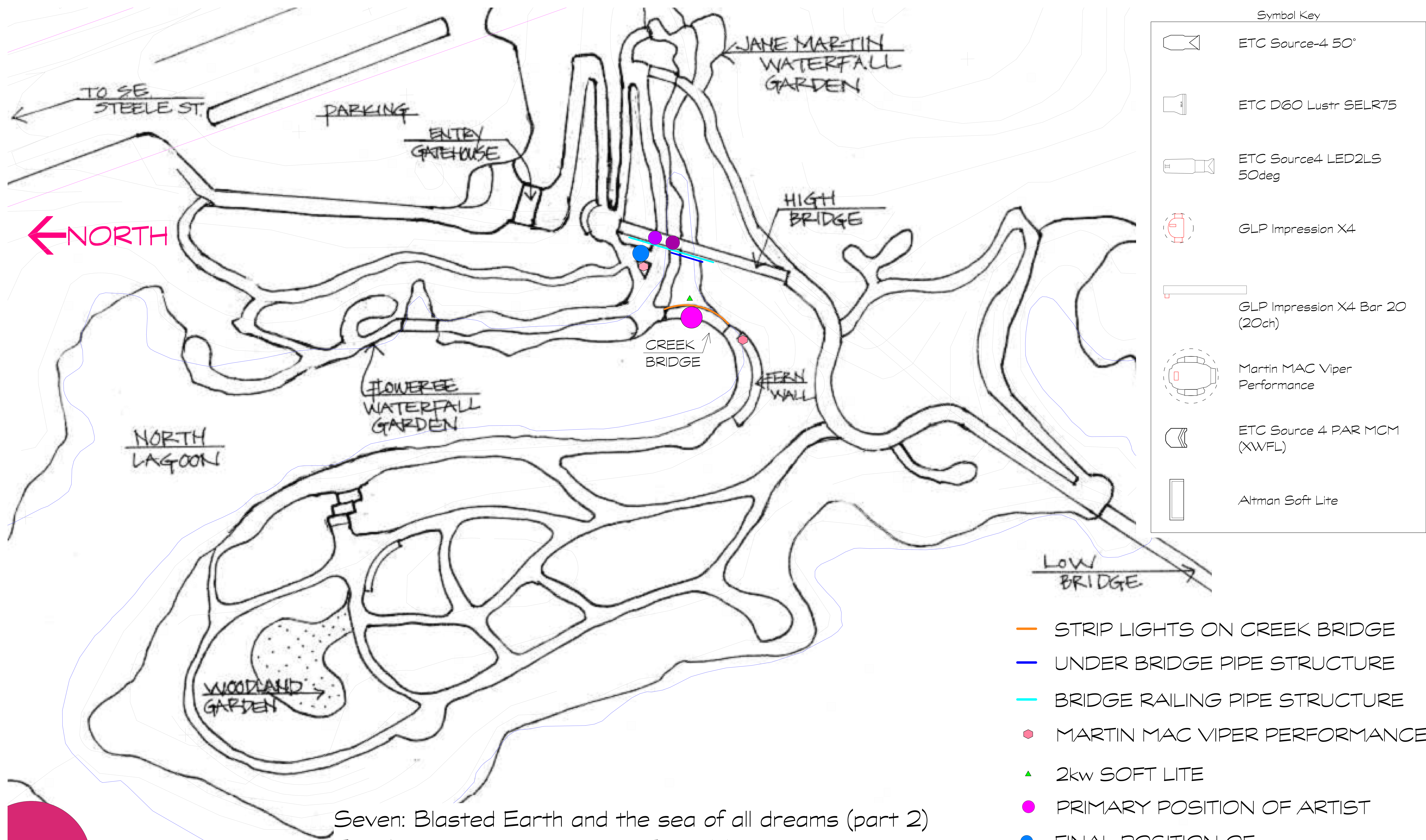
Sky

Design

JARMAN
(All This Maddening Beauty)

ACT 6 MAP 1:200 Ry Burke LIGHTING DESIGN
Crystal Springs Rhododendron Garden
SE Portland, Oregon

6



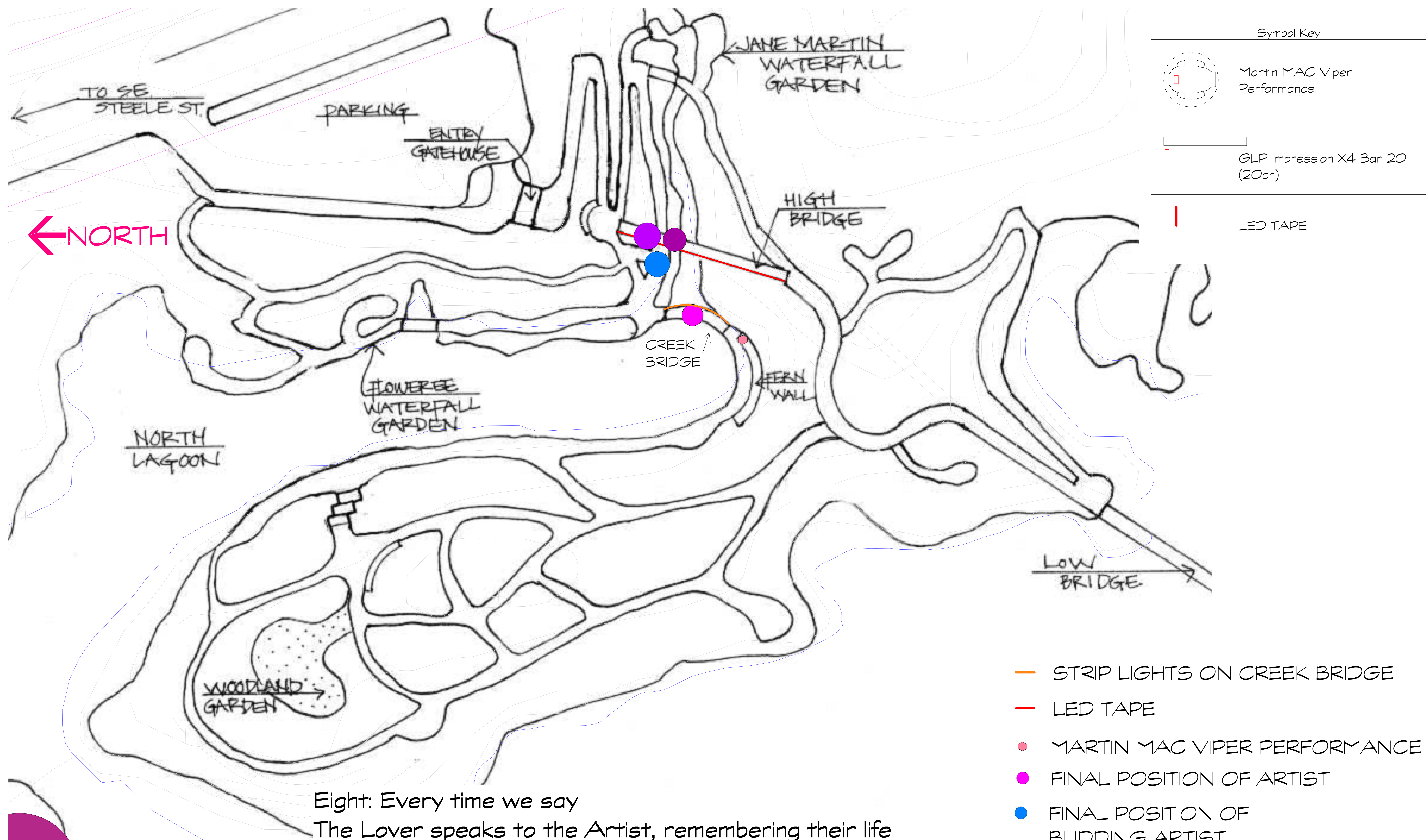
Sun: 8:35-8:50pm
main sunset

Color Journey

Sky

Design

Seven: Blasted Earth and the sea of all dreams (part 2)
 The Artist reappears by the Fern Wall, but cannot pass over the creek bridge to engage. The Budding Artist retreats slightly, overcome. The Audience and Lover remain watching from the High Bridge.
 The Artist is frontlit by LED strips on Creek Bridge, and backlit by Viper on Fern Wall.

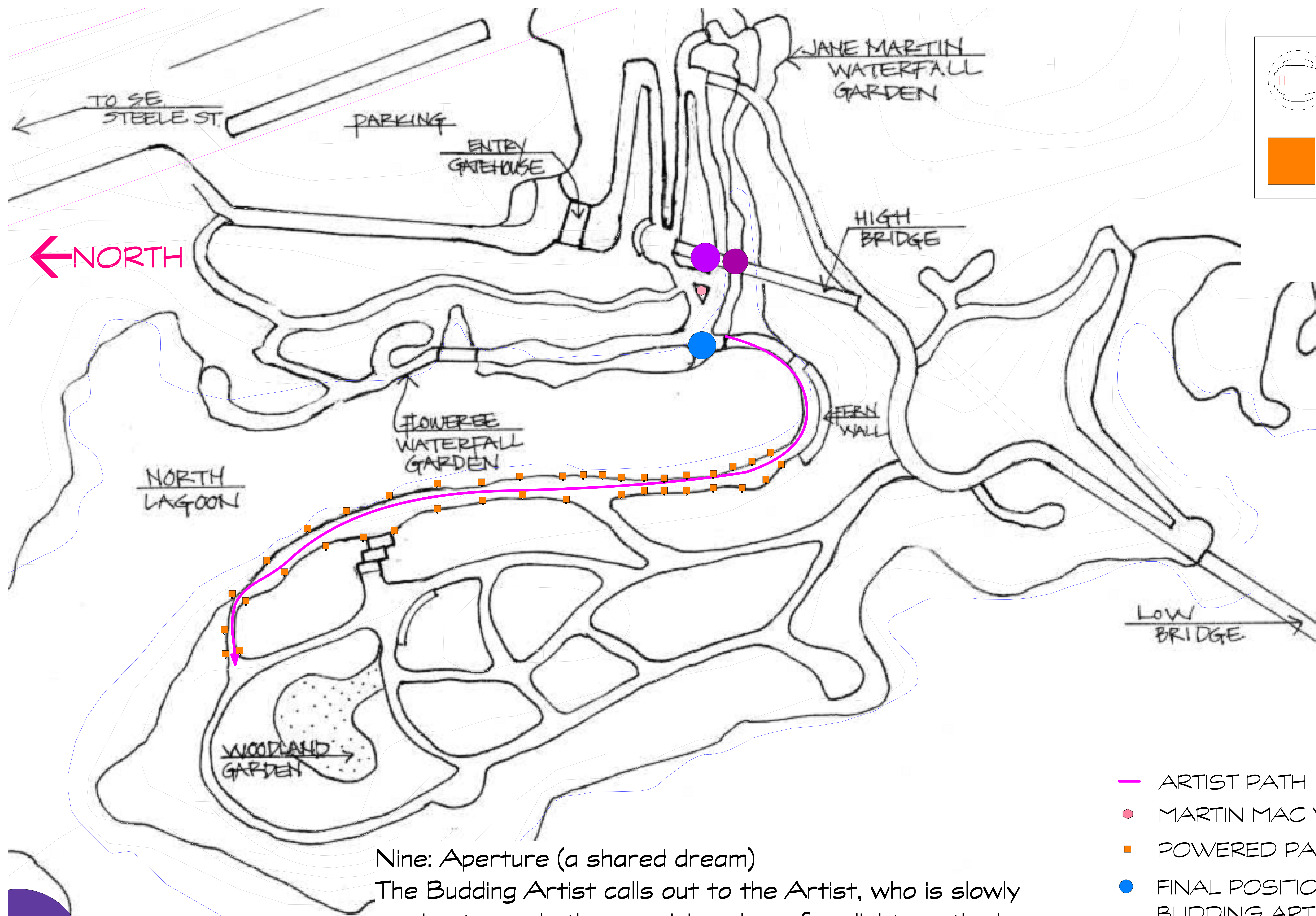


Eight: Every time we say
 The Lover speaks to the Artist, remembering their life together. The Artist starts to fade back into time. The Audience and Budding Artist stay put. The song is heard through speakers.
 The Lover, and audience, are softly illuminated by LED tape on High Bridge Railing. The Artist is lit with saturate light by Creek Bridge strip lights

Sun: 8:50-8:55pm
 end of sunset

Color Journey





Symbol Key

Martin MAC Viper Performance

POWERED PATH LIGHT

- ARTIST PATH
- MARTIN MAC VIPER PERFORMANCE
- POWERED PATH LIGHT
- FINAL POSITION OF BUDDING ARTIST
- FINAL POSITION OF LOVER
- FINAL POSITION OF AUDIENCE

KEY

Nine: Aperture (a shared dream)

The Budding Artist calls out to the Artist, who is slowly moving towards the remaining glow of sunlight, as the Lover and the Audience watch from the High Bridge. The Artist's voice is heard through speakers, growing quieter as the Artist eventually continues out of sight.

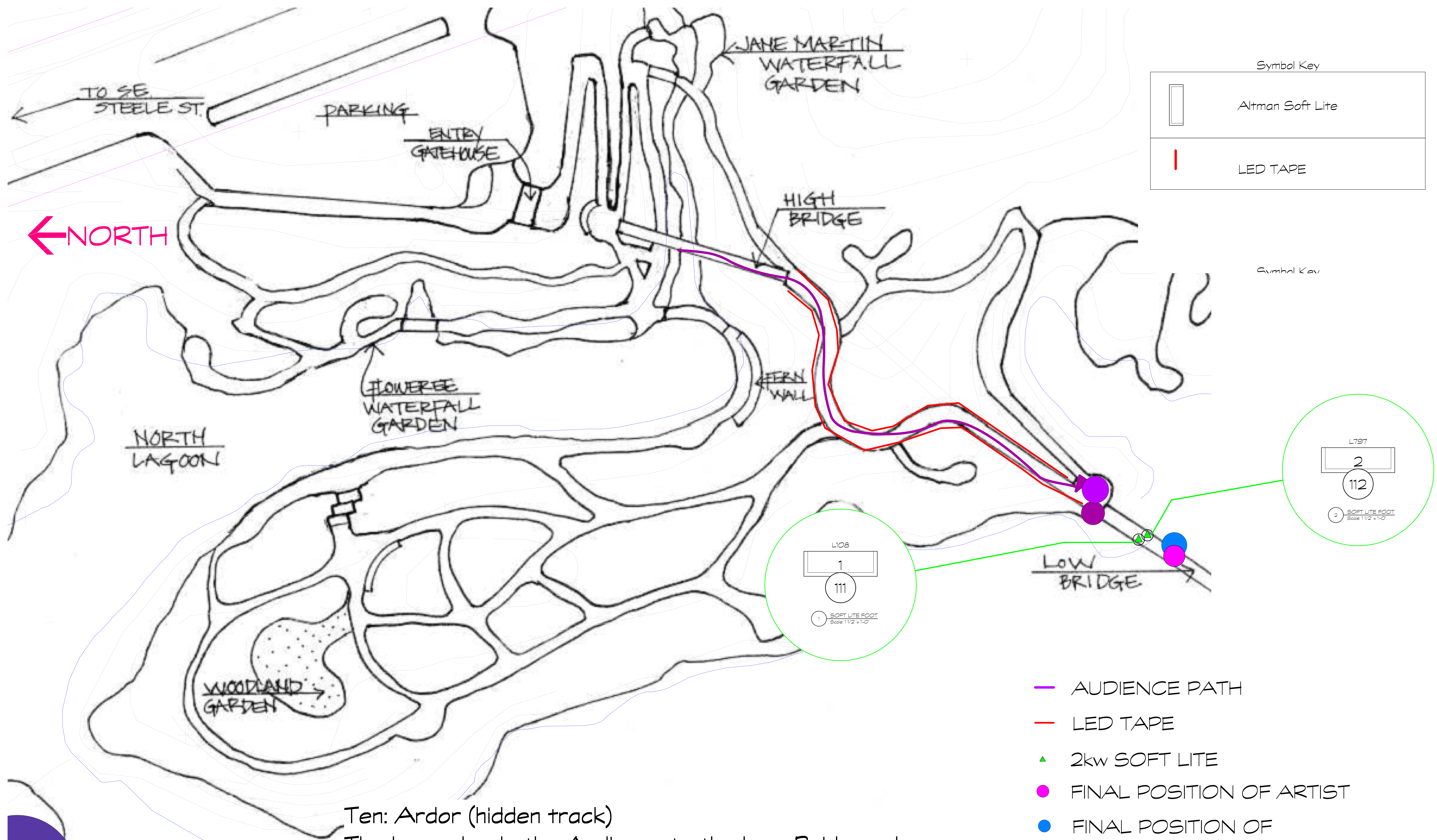
The Budding Artist is backlit with cool light by the ground Viper. The path lights bump on as the Artist passes, then slowly dim to black

Sun: 8:55-9:10pm
beginning of dusk

Color Journey

Sky

Design



Ten: Ardor (hidden track)

The Lover leads the Audience to the Low Bridge, where the Artist is filming the Budding Artist-as-Muse, where the text is heard over speakers.

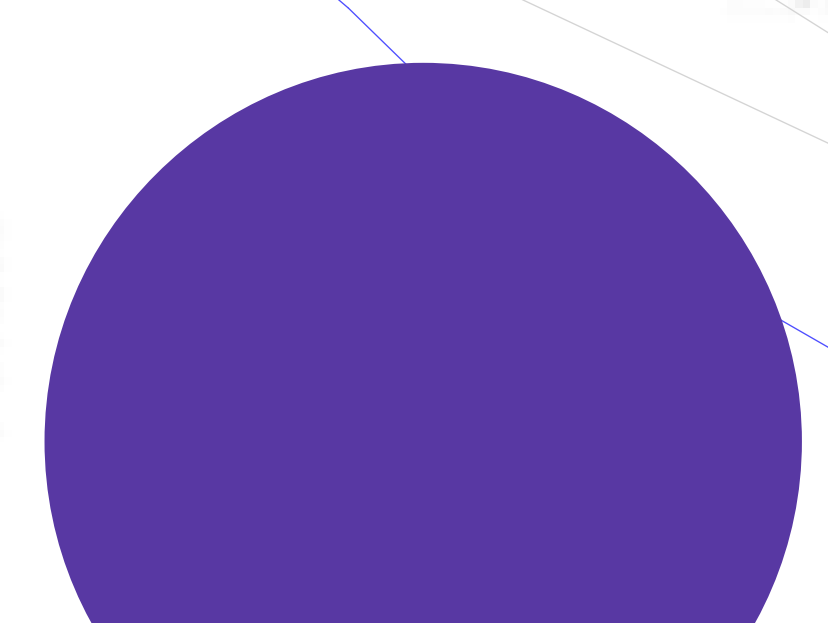
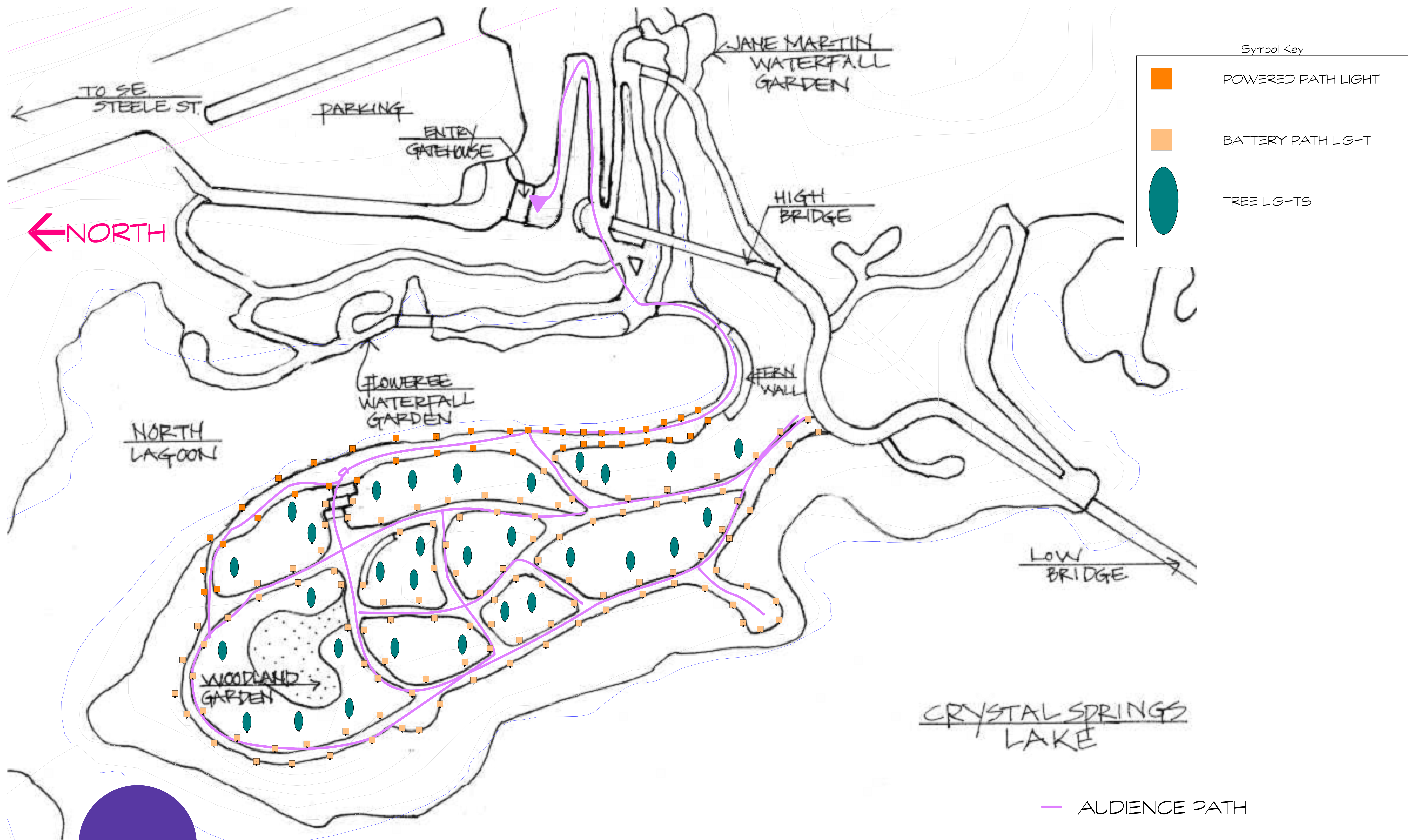
The path is lit by cool white LED tape. The Artist and Muse are lit by foot lights on bridge, which also reveal the island across the lake

Sun: 9:10-9:20pm
dusk

Color Journey

Sky

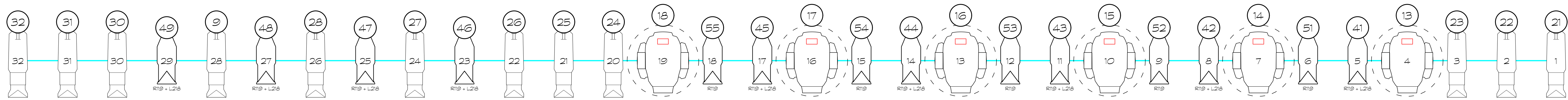
Design



Sun: 9:20-10:00pm
night sky

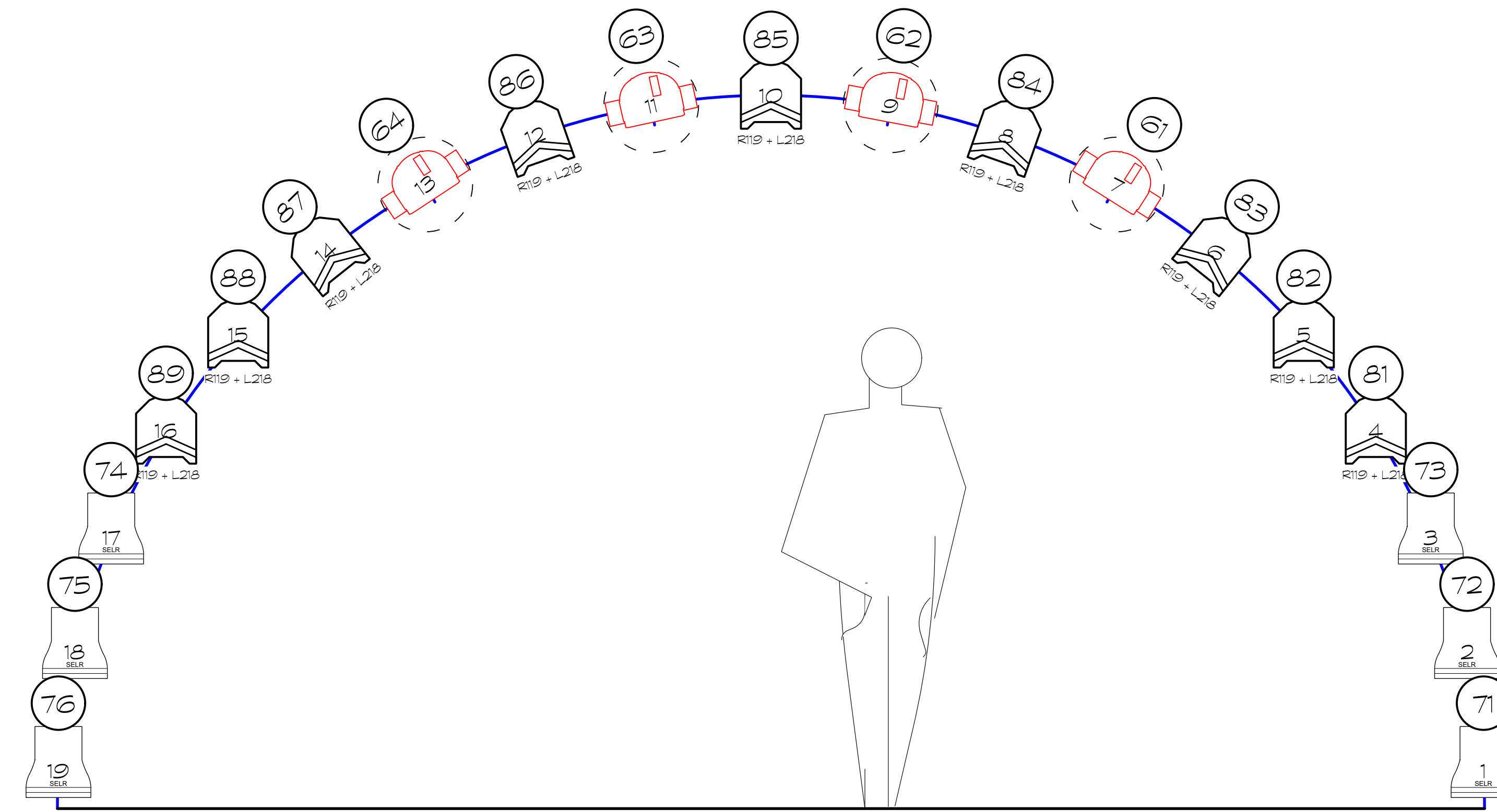
Post-Show
The Audience is free to wander the lit
Island until 10pm

- AUDIENCE PATH
 - POWERED PATH LIGHT
 - BATTERY PATH LIGHT
 - CHRISTMAS LIGHTS IN TREES
- KEY

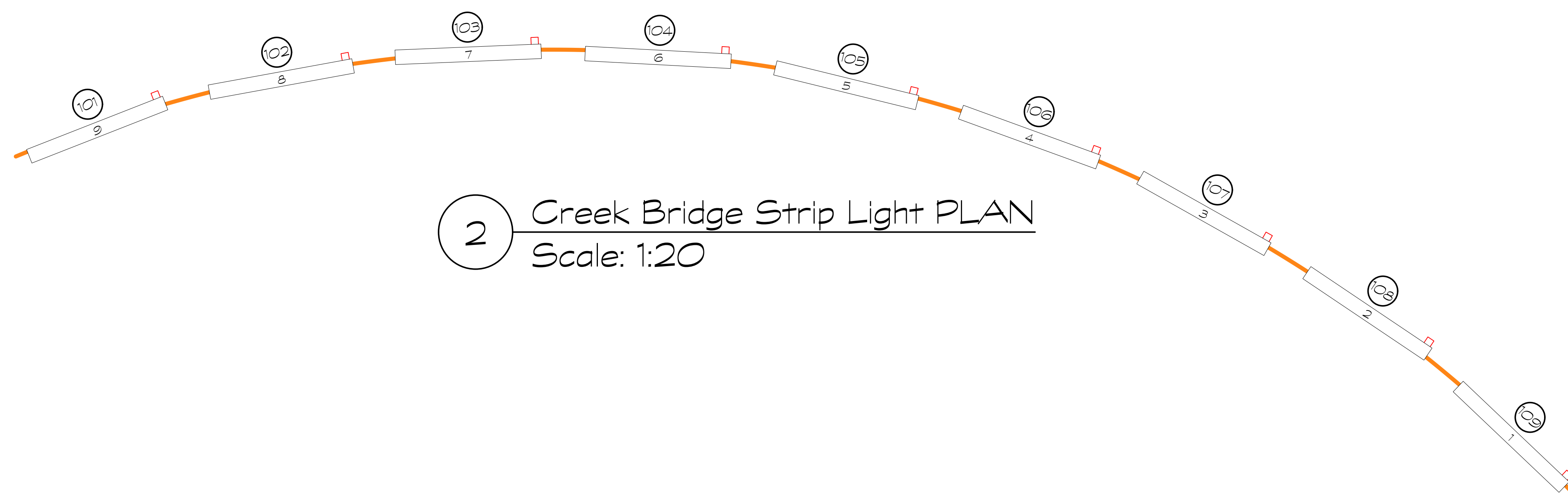


RAILING

ARCH



1 HIGH BRIDGE ELEVATION
Scale: 1:15



2 Creek Bridge Strip Light PLAN
Scale: 1:20

Symbol Key

	ETC Source-4 50°
	ETC Source 4 PAR MCM (XWFL)
	ETC D60 Lustr SELR75
	ETC Source4 LED2LS 50deg
	GLP Impression X4
	Martin MAC Viper Performance
	GLP Impression X4 Bar 20 (20ch)